

Elements

#0190 Troubleshooting

#0190 Fine dust filter for intermediate acrylic.

- The Elements has a sealed intermediate acrylic to prevent any dust or debris from entering the base UV LED area.
- This prevents debris or dust from touching the UV LEDs and causing damage.
- The cooled airflow over this area is now highly filtered.



Ergoline

wellsystem

SunLync

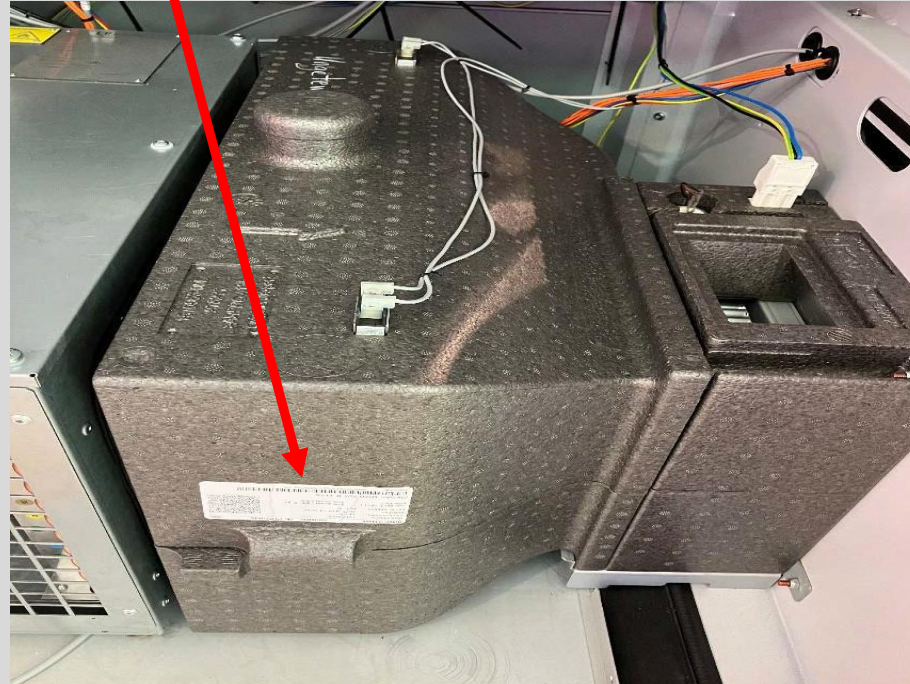
JK | SHOP

Elements

#0190 Troubleshooting

#190 Fine dust filter for intermediate acrylic.

- These instructions may not be included in early versions of the Operating Instructions 1033787-00.
- Time to replace the filter. PN 1516988-00
- The filter is located to the right of the AC unit in the base.



Ergoline

wellsystem

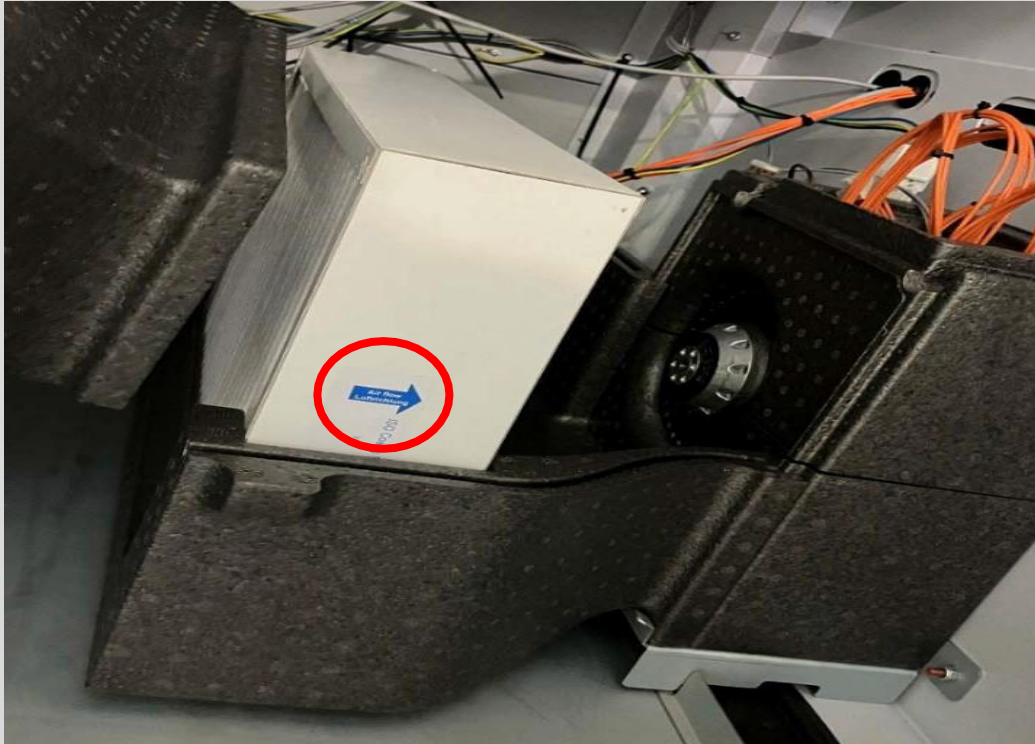
SunLync

JK | SHOP

Elements

#0190 Troubleshooting

- Lift the lid off and remove the old filter. (No fasteners to release)
- The airflow arrow must point away from the AC unit.



Ergoline

wellsystem

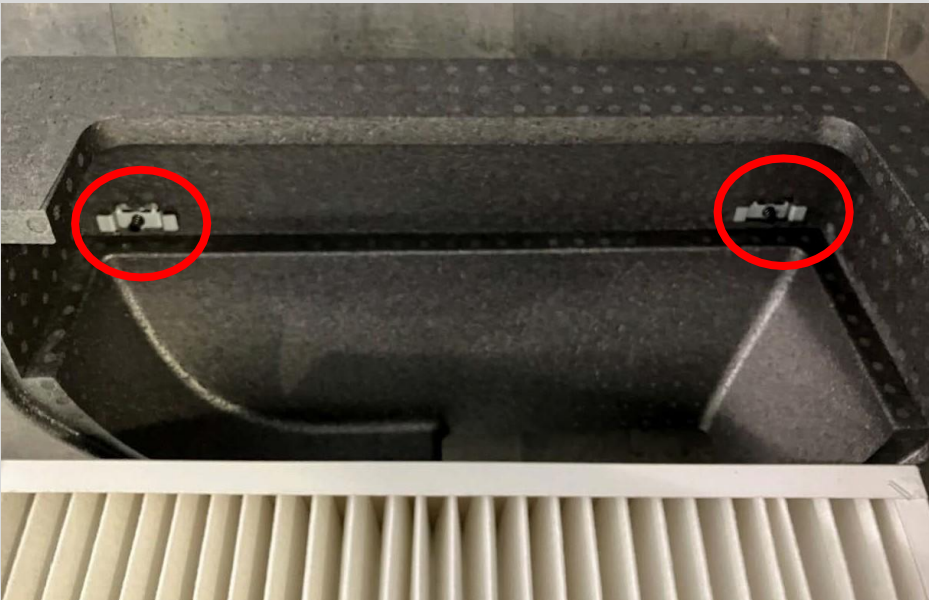
SunLync

JK | SHOP

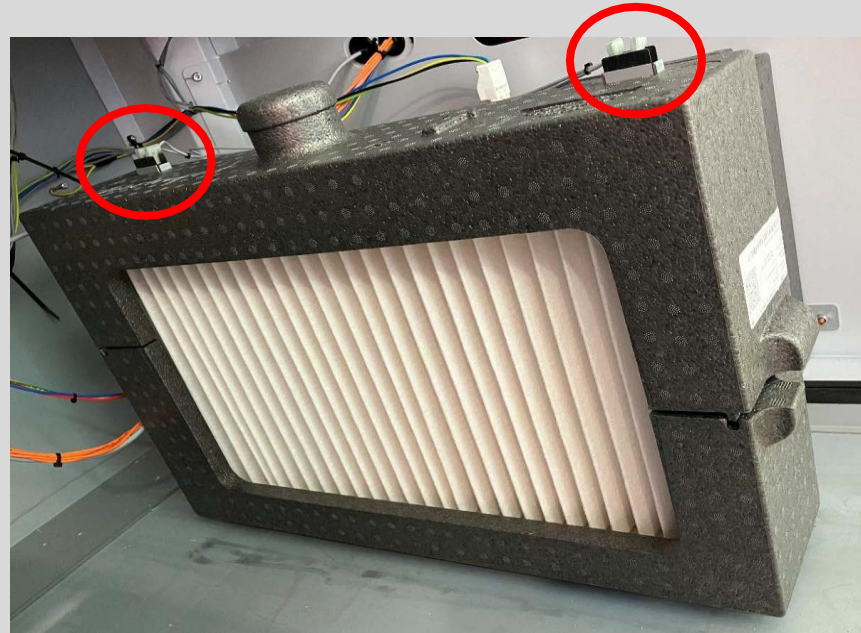
Elements

#0190 Troubleshooting

- Switches from under the lid.



- There are 2 safety switches to ensure the filter is installed correctly.



Ergoline

wellsystem

SunLync

JK | SHOP

Elements

#0190 Troubleshooting

- Reassemble the filter lid.
- Close the bed.
- Access the PSM Hours of Operation.
- Reset the hours to zero.
- The error will clear.



Ergoline

wellsystem

SunLync

JK | SHOP