



CompuSUN® Sun System Control Sololutions

“Intelligent Tanning Solutions”

**Computer Control Station IV (CCSIV)
Installation and Users Manual**

Version: 2.17

Effective: June 12, 2000

Licensed by: SunErgoline, Inc.

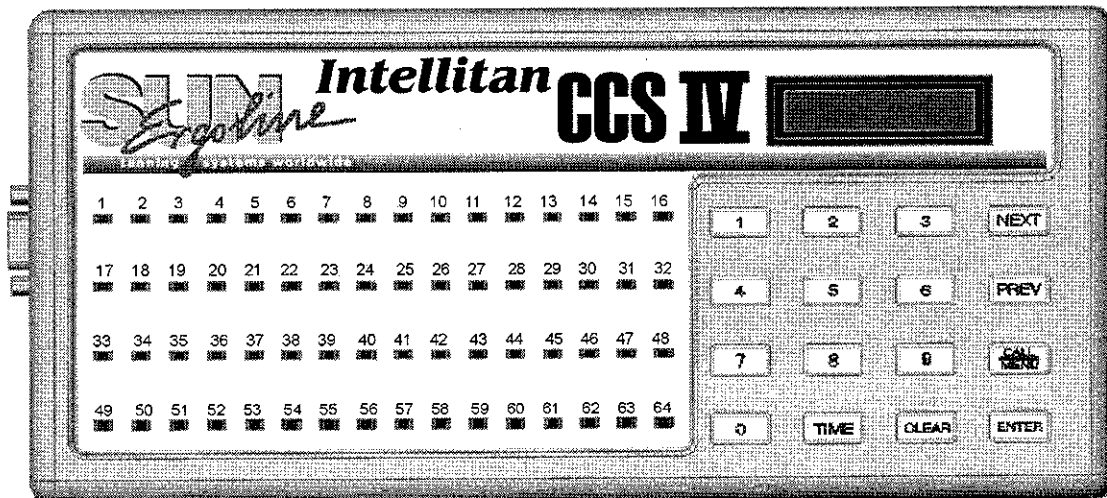


TABLE OF CONTENTS

Section 1 - DESCRIPTION	Page 6
Section 2 - PACKING LIST	Page 6
Section 3 - FEATURES	Page 7
Section 4 - SPECIFICATIONS	Page 7
Section 5 - BEFORE YOU BEGIN	Page 8
Section 6 - CCS IV HARDWARE INSTALLATION	Page 9
6.1 - BED TIMER ADDRESSING	Page 9
6.2 - PREPARING THE NETWORK CABLE	Page 9
6.2.1 - DAISY CHAIN NETWORK	Page 10
6.2.2 - BACK-BONE NETWORK	Page 12
6.2.3 - CONNECTING THE NETWORK CABLE	Page 16
6.2.4 - POSITION AND POWER CONNECTION	Page 16
6.2.5 - THE FIRST COMMUNICATIONS LINK	Page 17
Section 7.0 - GUIDE TO CCS IV OPERATIONS AND FEATURES	Page 18
Section 7.1 - SECURITY LEVELS	Page 19
Section 7.2 - THE CCS IV DISPLAYS	Page 19
Section 7.3 - THE CCS IV KEYPAD	Page 23
7.3.1 - THE NEXT KEY	Page 23
7.3.2 - THE PREV KEY	Page 23
7.3.3 - THE CALL/MENU KEY	Page 24
7.3.4 - THE ENTER KEY	Page 24
7.3.6 - THE TIME KEY	Page 24
Section 8.0 - MANUAL OPERATIONS ...	Page 25
8.1 - STARTING A SESSION	Page 25
8.2 - STOPPING A SESSION	Page 26
8.3 - VIEWING PARAMETERS	Page 26
8.4 - EDITING PARAMETERS	Page 27
Section 9.0 - CCS IV PARAMETERS	Page 28
9.1 - MAXIMUM BED NUMBER	Page 28
9.2 - MANAGER ADDRESS	Page 28
9.3 - MANAGER RE-SCAN TIME	Page 29
9.4 - MAXIMUM SLAVE	Page 29
Section 10 - COMPUTER OPERATIONS	Page 30
10.1 - DESCRIPTION	Page 30
10.2 - IMPORTANT INFORMATION	Page 30

10.3 - LICENSE INFORMATION	Page 30
----------------------------------	---------

TABLE OF CONTENTS

10.4 - BEFORE YOU BEGIN	Page 31
10.5 - CCS IV HARDWARE INSTALLATION	Page 31
10.6 - UTILITY SOFTWARE INSTALLATION ...	Page 32
10.7 - LOAD THE PROGRAM.....	Page 33

Section 11.0 - NETWORKING	Page 34
Section 12.0 - TECHNICAL SUPPORT ..	Page 36
12.1 - BEFORE YOU CALL.....	Page 36
Section 13.0 - COMMERCIAL SALON SOFTWARE ...	Page 37
Helios Salon Software	Page 37
Sunmate	Page 38
SunTouch.....	Page 39
Appendix A - TROUBLE SHOOTING	Page 40
Appendix B - SETTING ADDRESS ON TWO BUTTON REMOTE....	Page 42
Appendix C - SETTING ADDRESS ON INTELLITAN PLUS ..	Page 43
Appendix D - PARAMETER TABLE	Page 44

WARNING! THIS IS A SENSITIVE ELECTRONIC DEVICE. PLEASE READ ALL INSTRUCTIONS BEFORE BEGINNING INSTALLATION. FAILING TO DO SO MAY DAMAGE THE CCS IV OR CONNECTED INTELLITAN® TIMER(S).

The information in this manual is believed to be correct. However, SunErgoline, Inc. assumes no responsibility for any errors herein. This information is subject to change without notice, and should not be construed as a commitment by SunErgoline, Inc.

Section 1 - DESCRIPTION

The Computer Control Station IV (CCS IV) is designed for complete automation and control of your tanning equipment. It is a one to 64 station control device for the Intellitan® Series timer. The CCS IV provides a front desk interface to SunErgoline tanning units using the Intellitan® timer allowing the salon owner to control the advanced functions of the Intellitan® timer such as total bed and lamp hours, session counts, average costs, voltages, temperatures, etc.. The CCS IV can be used as a stand-alone unit or can be controlled with a computer using a number of popular software packages. It is also an excellent manual backup system by its ability to operate your SunErgoline equipment in case your computer system fails.

Section 2 - PACKING LIST

Your CCS IV package should contain the following:

- 1 CCS IV Unit
- 1 9V @ 800mA Power Transformer
- 1 20 ft. Communication test chord.
- 1 This Manual
- 1 CCS IV Utility Software (3.5" diskette)

The Optional Computer Kit contains:

- 1 RS-232C Cable DB9M-DB9F
- 1 DB/25F-DB9/M cable adapter

If any of the above items are missing please contact your local distributor where the CCS IV was purchased.

NOTE: The computer cable, adapter, and diskettes are used only when connecting the CCS IV to a computer system

Section 3 - FEATURES

RS-232C Port:

Allows communication with computer. COM 1, 2, 3, or 4 can be used.

Display:

The CCS IV has 64 dual color LEDs showing the status of up to 64 beds. A 2x16 LCD display and 16-key keypad provides for manual operation.

Maximum Units:

1 CCS IV controls up to 64 beds.

8 CCS IVs may be networked to control up to 64 beds.

1 Computer can be connected to each CCS IV so up to eight computers can control up to 64 beds.

Section 4 - SPECIFICATIONS

Power Supply

CCS IV IN - 120VAC

OUT - 9 to 12vac @ 800mA

or 9 to 12vdc @ 800mA

Current Draw

800ma

Dimensions

CCS IV

Height - 5.25"

Width - 10"

Depth - 2"

Communication

CCS IV - PC RS-232C

Baud Rate

RS-232C - 9600 baud

Protocol

8bit, 1 Stop bit, No Parity

Section 5 - BEFORE YOU BEGIN

Please read all instructions before beginning.

If you are positioning the CCS IV in a location that requires running the network cable over ceilings, etc. you may experience interference from existing electrical wiring, fluorescent lighting ballasts, fax machines, credit card machines, etc. Therefore, prior to running network cable, verify that the cable will not cross over or interfere with existing wiring or appliances. It is strongly recommended that shielded cable be used when ever possible to minimize interference to the Intellitan Network.

Do not run RJ11 4-conductor phone line cord from each tanning unit in the communication link to the CCS IV location. The CCS IV network uses a daisy chain or Back-Bone wiring scheme instead.

Daisy Chain: The CCS IV connects directly to the first tanning unit. The first tanning unit connects to the second tanning unit. The second tanning unit connects to the third unit and so on throughout the communications chain. This method has a supported capacity of 10 tanning units.

Back-bone: A single cable connects the optional standard wall mounted network jacks for the CCS IV and each Intellitan timer. A single short network cable then connects the CCS IV and each Intellitan timer to the network. This method has a supported capacity of 64 tanning units.

The Intellitan Network cabling system utilizes RJ-22 *handset* connectors at the end of each cable when using the daisy chain method. This is the **ONLY** size that will fit into the receptacles located beneath the tanning unit(s) and into the network jack of the CCS IV.

When using a back-bone wiring plan a RJ-22 (handset) connector is required at one end of the network cable (to connect to the Intellitan timer or CCS IV) and a RJ-11 standard line connector is required at the opposite end of the network cable (to connect to the standard wall jack.)

NOTE: The network cable is wired differently from ordinary telephone cable. **Ordinary telephone extension cable found in most department stores will not work with the CCS IV without modification.** The Intellitan® network cable must be wired straight-through pin to pin with no twist in the cable. You can determine if your cable is wired properly by holding both ends of the cable in front of you with the release tabs down. The same color of wire should be on the far left in both connectors. This wire is normally black or yellow. If you have a black wire on the left in one connector and a yellow wire on the left in the other connector, your cable is wired for telephone use **and will not work with the CCS IV without modification.**

To install the connectors on the end of the network cable follow these simple steps:

1. Hold the ends of the cable side by side and position the four internal wires so that the first wire (from the left) on each cable end is the same color (usually black or yellow.)
2. Attach the RJ22 handset connector clip. Make sure that the release tab on each connector is in the **DOWN** position. If you are installing the cable over a significant length and cannot attach the RJ22 clips until the cable is extended, **REMEMBER COMMON COLOR TO THE LEFT, RELEASE TABS DOWN!**

WARNING: Your CCS IV is a sensitive electronic device. You must take care not to allow the network cable wires to touch each other or internal damage to the CCS IV could result. All wire connections throughout the network should be insulated and if screw terminals are used; wires should be placed where it is not possible for a short to occur across any wires.

Section 6 - CCS IV HARDWARE INSTALLATION

6.1 - BED/TIMER ADDRESSING

Prior to making ANY connections to the tanning units, each tanning unit must be assigned a unique number or address. Without an individual address the CCS IV will not be able to distinguish which unit it is communicating with. Remember you must assign a different address to each tanning unit in the communications link. Do not program or assign the address zero (0) to a unit. Do not assign the same address to more than one unit.

Although it is a good idea to assign addresses in the order that the units are physically laid out in the salon, it is not absolutely necessary. The CCS IV will find the unit you wish to communicate with so long as it is properly and uniquely addressed.

Please refer to the appendix at the end of this document for detailed instructions on addressing your Intellitan Timer.

Once each tanning unit in the communication link has been assigned a different address you may proceed.

6.2 - PREPARING THE NETWORK CABLE

There are two methods of wiring a salon each having their own merits. The first method is called "Daisy Chain" and the second method is "Back-Bone." Daisy chain is easy to install, and requires less time than back-bone wiring, but a problem at any point in the network, can cause problems or failures from that point to the end of the network. For example, a bad connection at timer number 4 can cause timers 4 through 15 (assuming a 15 bed salon) to fail. Daisy-chaining is only supported up to twenty (10) tanning units (10 units on pre-95 version timers.).

The second method is Back-Bone wiring. Back-Bone wiring requires more planning, hardware, and time to install. In the end, however, a more stable network results from the extra effort. In a

Back-Bone network, cable or timer problems with one tanning unit usually do not affect any other tanning units on the network.

6.2.1 - DAISY CHAIN NETWORK

YOU WILL NEED Flat satin 4 conductor telephone line cord Enough to reach from the CCS IV to the first tanning unit, and then from the first tanning unit to the second, and so on.
(LCOM:TDB4/RS:278-366)3

4-position modular handset (RJ-22) clips At least two for each Intellitan timer and one for the CCS IV. (LCOM:TD4P4HS/RS:279-298)

Telephone connector crimp tool. (LCOM:TDB64/RS:279-388)

Most of the above items are available at your local Radio Shack or other electronics store or at L-Com (800-343-1455).

Each Intellitan timer is equipped with two network jacks. The daisy chain method consists of wiring from the CCS IV to the first tanning unit and then from the first tanning unit to the second, and so on using telephone-like network cable.

Step 1: The Intellitan Network can be wired using standard telephone line cord. This cable is the same type as normally runs between a regular telephone and the wall jack, with one very important exception. The difference between the network cable used in the Intellitan network and standard telephone line cord is the type of modular connector used and how it is placed onto the cable. The entire network should be less than 2000 ft. in length.

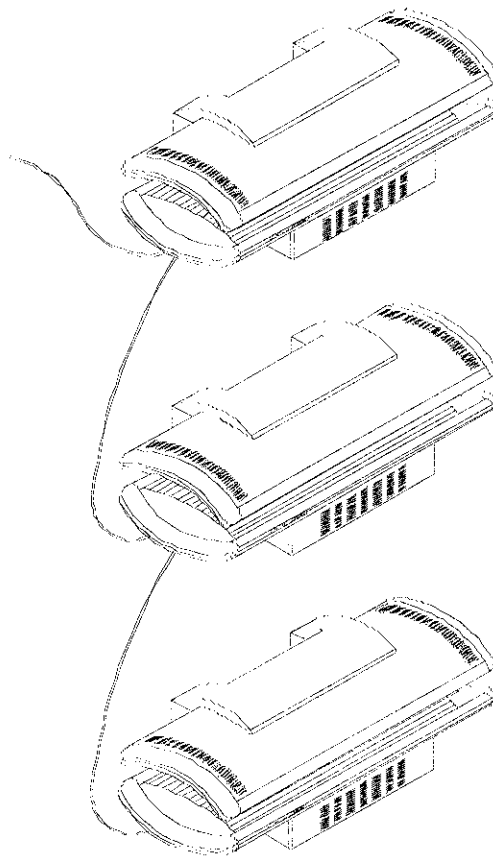
Step 2: To prepare the network cable, measure the network cable to the length required to connect the CCS IV to the first tanning unit. Allow sufficient slack for later alterations and so that the cable can be placed out of the way of vacuum cleaners, walkways, etc.

Step 3: Using a handset crimping-tool, strip the insulation from both ends of the cord, exposing the four (4) insulated conductors within. Do not remove the shielding from the four (4) insulated conductors.

Fit the RJ22 handset clip into the appropriate position within the crimping tool (refer to the crimping tool instructions for additional information.) Insert the end of the network cable into the handset clip always making sure that the same color wire is to the left. Make sure that all four wires are in the proper position, then crimp down, locking the wires into the clip. Remove the clip and repeat for the other end of the network cable.

NOTE: The network cable is wired differently from ordinary telephone cable. Ordinary telephone extension cable found in most department stores will not work with the CCS IV. The Intellitan® network cable must be wired straight through pin to pin with no twist in the cable. You can determine if your cable is wired properly by holding both ends of the cable in front of you with the release tabs down. The same color of wire should be on the far left in both connectors. This wire is normally black or yellow. If you have a black wire on the left in one connector and a yellow wire on the left in the other connector, your cable is wired for telephone use and will not work with the CCS IV.

WARNING: Your Intellitan® Protocol Interface is a sensitive electronic device. You must take care not to allow the network cable wires to touch each other or internal damage to the CCS IV could result. All wire connections should be insulated and screw terminals placed where it is not possible to cause a short across the cable.



Typical Daisy Chain Network Configuration.

6.2.2 - BACK-BONE NETWORK

YOU WILL NEED: Shielded 4 conductor telephone cable. Enough to reach from the CCS IV and travel room to room inside the walls, across the ceilings, etc.
(LCOM:TFC2002/RS:278-873)

Flat satin 4 conductor telephone line cord. Enough to reach from the CCS IV to the wall jack and from the Intellitan timer to the wall jack in each room. (LCOM:TDB4/RS:278-366)

4-position modular handset (RJ-22) clips At least one for each Intellitan timer and one for the CCS IV. (LCOM:TD4P4HS/RS:279-298)

4-position modular line (RJ-11) clips At least one for each Intellitan timer and one for the CCS IV. (LCOM:TD6P4C/RS:279-384)

Standard ATT-type Telephone wall jack At least one for each Intellitan timer and one for the CCS IV. ATT-type wall jacks have a 110-style punch down block and are not available at Radio Shack. (LCOM:TSU1080-4C (flush)/TSU1082-4C (surface)/RS:279-349 (screw terminal))

Telephone connector crimp tool. (LCOM:TDB64/RS:279-388)

110-style punch down tool (if ATT style wall jacks are used)
(LCOM:H353 and H351B110/RS-NA)

Most of the above items are available at your local Radio Shack or other electronics store or at L-Com (800-343-1455).

Back-bone wiring requires that each tanning unit be T-connected to the back-bone using a standard telephone wall jack located near the head of the tanning unit. This T-connection prevents simple cable or connection trouble from one tanning unit causing failures on any other tanning units. Back-bone wiring uses the ATT-style telephone jack which ideally has no breaks in the back-bone cable. If ATT-style 110-type wall jacks are not available and you are using a standard screw-terminal type wall jack you must be very careful in your splices at each screw terminal or network cable problems will result.

The back bone method consists of wiring a single shielded 4-conductor cable from the front desk wall jack to the room where the first tanning unit is and looping through without cutting the cable to the second, and so on always looping through, ideally never cutting the "back-bone" cable. If you have to cut the cable for any reason make absolutely sure that your splice has good connections and is in a place that is easily accessible should network problems occur.

Once the back-bone cable is in place, install the ATT-style wall mounted telephone jacks referring to the diagram on the next page. One jack is required in each tanning room and at the front desk where the CCS IV is installed. The 110-style punch-down block allows you to strip back the outer insulation and shielding and make a T-like connection into the back bone cable without breaking the cable. Make sure that what ever color code scheme you start with on the first jack you continue throughout each of the jacks.

After the wall jacks are in place, a short (3' or less) network cable is required to connect the tanning unit to the backbone cable and to connect the CCS IV to the backbone cable.

To prepare the network cable measure the network cable to the length required to connect the CCS IV to wall jack at the front desk, or the tanning unit to the wall jack in the room. Allow enough slack so that the cable can be placed out of the way of vacuums, walking, etc.

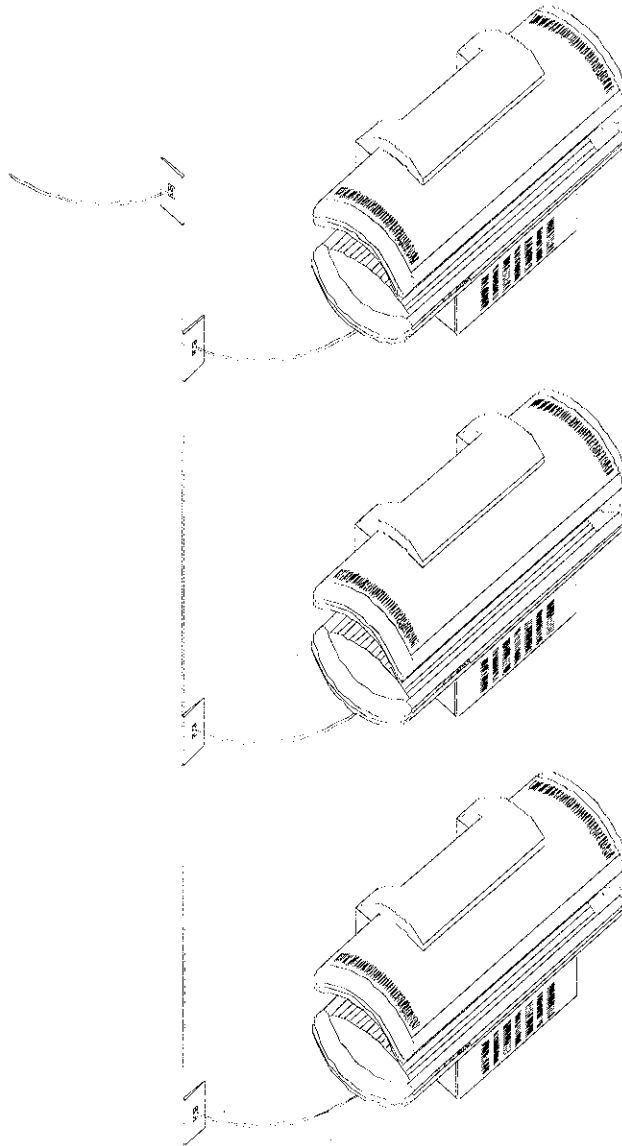
Using the telephone-crimping tool, strip the insulation from both ends of the cord, exposing the four (4) insulated conductors within.

Fit a RJ22 handset clip into the appropriate position within the crimping tool (refer to the crimping tool instructions for additional information.) Insert the end of the network cable into the handset clip always making sure that the same color wire is to the left. Make sure that all four wires are in the proper position, then crimp down, locking the wires into the clip. Remove the clip and repeat for the other end of the network cable using a RJ-11 line cord clip. Remember that in a back-bone network, the network cable has a handset connector (RJ22) on one end that connects to the Intellitan timer or CCS IV and a line cord connector (RJ11) on the other end that connects to the wall jack.

NOTE: The network cable is wired differently from ordinary telephone cable. **Ordinary telephone extension cable found in most department stores will not work with the CCS IV.** The Intellitan® network cable must be wired straight through pin to pin with no twist in the cable. You can determine if your cable is wired properly by holding both ends of the cable in front of you with the release tabs down. The same color of wire should be on the far left in both connectors. This wire is normally black or yellow. If you have a black wire on the left in one connector and a yellow wired on the left in the other connector, your cable is wire for telephone use **and will not work with the CCS IV.**

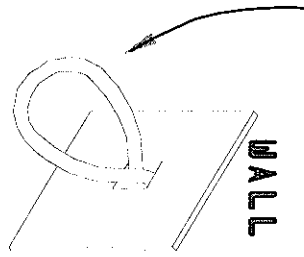
WARNING: Your Intellitan® Protocol Interface is a sensitive computer device. You must take care not to allow the network cable wires to touch each other or internal damage to the CCS IV could result. All wire connections should be insulated and screw terminals placed where it is not possible to cause a short across the cable.

Note: The length of the cable connecting the tanning unit to the back-bone network should not exceed three (3) feet in length.



Typical Back-Bone Network Configuration.

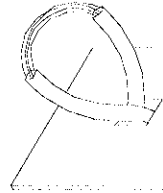
**SHIELDED
CABLE**



STEP 1

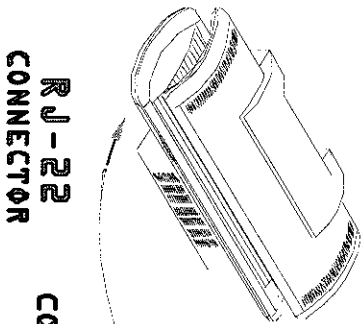
**LOOP OF CABLE
APPROX. 10"
IN LENGTH.**

WALL



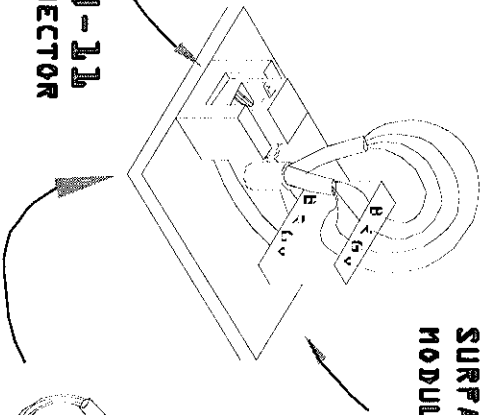
STEP 2

**LOOP OF CABLE WITH APPROX.
1" OF SLEEVING REMOVED
(WHEN REMOVING SLEEVING,
AVOID DAMAGING OR STRIPPING
INNER WIRES)**



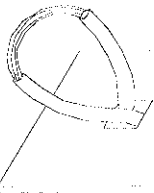
**RJ-22
CONNECTOR**

**RJ-11
CONNECTOR**



**SURFACE OR FLUSH
MODULAR CONNECTOR.**

WALL



STEP 3

6.2.3 - CONNECTING THE NETWORK CABLE

NOTE: When installing the network cable take care not to run the cable over or close to fluorescent lighting ballasts, high voltage building wires or conduit, or where the wire could become pinched or torn.

IMPORTANT NOTE: Make sure that the CCS IV and the first tanning unit is powered and that the tanning unit has been assigned an address from 1-64.

Plug the network cable into either of the receptacles located beneath the tanning unit near the head, or, in the case of an Intellitan Remote Timer, into either of the receptacles located on the bottom of the timer box.

Connect the other end of the network to the CCS IV bed port indicated by 3 in figure 1. This port requires an RJ-22 or telephone HANDSET connector. The CCS IV can control up to 64 separate tanning units. It is not recommended that you daisy-chain more than ten units to any CCS IV.

The CCS IV scans for newly attached equipment every two minutes. Once the equipment is recognized by the CCS IV a zero (0) will appear in the display location representing that timer. You can force a rescan of the network by either cycling the power on the CCS IV or by entering and exiting the parameter mode.

6.2.4 POSITION AND POWER CONNECTION

Prior to making any connections to the tanning units, it is a good idea to position the CCS IV in the location in which it will actually be used for salon operation.

Plug the barrel connector of the A/C adapter into the jack on the right side of the CCS IV, indicated by a 2 in figure 1. Then plug the A/C adapter into a standard 120 volt outlet. You should hear a beep, then the sixty-four LEDs on the CCS IV should flash all red, then all green. The display will show the software version and scan the bed network for the available beds.

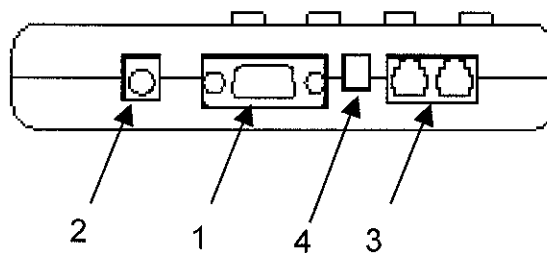


Figure 4

6.2.5 TESTING THE FIRST COMMUNICATIONS LINK

Before attempting to connect more than one unit to the communication link, it is important to verify that the CCS IV is functioning properly. Connect the CCS IV to the first tanning unit and follow these simple steps to test the communications link:

Step 1: Make sure the timer you have connected is showing up on the CCS IV.

Step 2: Once you have located the timer on the CCS IV, the LED corresponding to the attached timer should be green.

Step 3: Press the CALL / MENU button, key a security code and press ENTER (see section 7.1).

Step 4: Press the TIME button and key a value for time (**the time values entered on the CCS IV must always be greater than one (1) minute, fractions of minutes are not allowed**) then press ENTER. The CCS IV will send the selected time to the timer, the led display will turn off, and the timer will begin a session delay if programmed, or immediately start if no session delay is preprogrammed. If a session delay is preprogrammed on the Intellitan timer, the display will show delay time and the word DELAY will be displayed on the CCS IV. Once the tanning unit has started, the tanning time remaining is displayed and the word ON will appear on the display.

NOTE: The timer will not accept new time during the post session cooling period. The post session cooling delay must expire and the cooling fans turn off before any new time can be entered. The CCS IV will display the word COOL when the timer is in a fan delay.

Step 5: You will notice during the last two minutes of the session, the LED corresponding to unit will begin to flash red. Once the session has expired and the unit enters the post session cooling delay, the LED will begin to flash green. If the post session cooling has been preprogrammed, the display on the CCS IV will read COOL and the corresponding display will flash green. If no post session cooling is preprogrammed or the timer does not have the feature but the clean room feature has been preprogrammed, the LED will stop flashing then turn red and the word DIRTY will appear on the display.

Once it is determined that the CCS IV is properly communicating with the first tanning unit in the communications link additional tanning units can be added to the link. You can wait for the CCS IV to re-scan and recognize additional tanning units on the network at the specified scan interval or press the CALL / MENU button and key the value 999 and press ENTER. The CCS IV will not recognize new beds if the scan rate has been set to zero, and you must use the above mentioned procedure for the CCS IV to scan the network and recognize new beds.

Before attempting to connect additional tanning units repeat the testing procedures outlined previously to assure a proper network connection. When it is determined that the CCS IV is properly communicating with the first and second tanning units, proceed with the next connection, stopping to test each tanning unit after it is connected.

Section 7.0 - GUIDE TO CCS IV OPERATIONS AND FEATURES

Through one or multiple units of the CCS IV control you can control the complete operation of one to sixty four tanning units (up to eight units of the CCS IV can be networked together). From a remote or front desk location, for each individual tanning within the communication link using the CCS IVs you can visually:

1. Identify the individual units.
2. Enter time.
3. Start a tanning session.
4. End a tanning session and clear time.
5. View the tanning units operating status.
6. View and edit parameters of the Intellitan and Intellitan Plus timers.
7. Continuously monitor the operating status of each unit.

The status of a tanning unit can be determined by glancing at the dual colored lights corresponding to the tanning unit on the CCS IV console.

Green = Bed is ready for a new session.

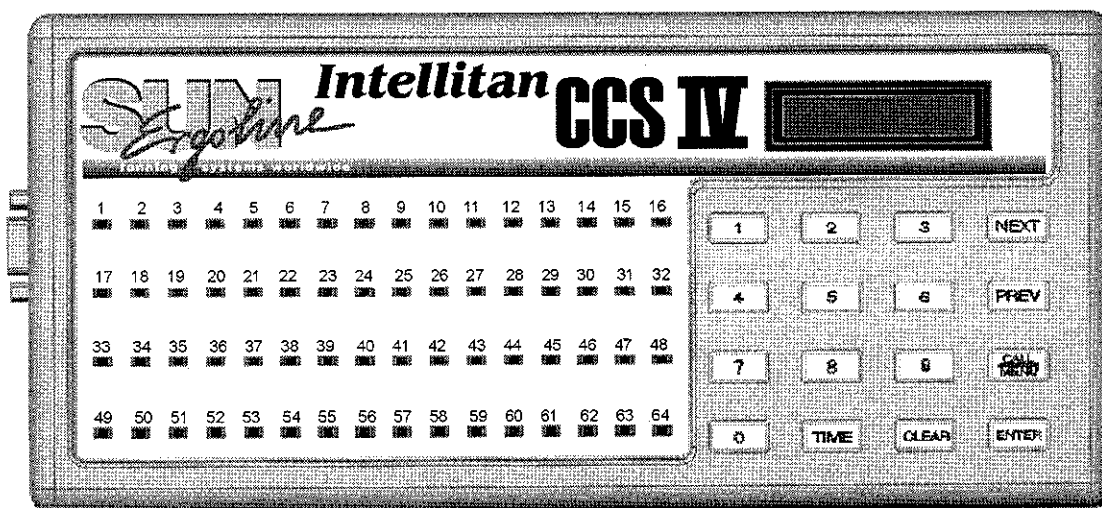
Red = Bed needs to be cleaned.

Off = Bed in use or not available.

Flashing Red = There are less than two minutes left in an session.

Flashing Green = Bed is in the Cool Down Mode.

Yellow = Error.



7.1 - SECURITY LEVELS

There are 4 security levels on the CCS IV. When the CALL / MENU button is pressed, the display will prompt you for a security number.

You must enter security level 4 to change the Security Level Numbers. See the attached sheet for the factory default security levels. The description of these levels are as follow:

Computer Control Level

Sessions can be monitored, but not started manually. Parameters such as Lamp Hours, Session Counts, etc. cannot be checked or changed.

Level -1 - Employee Level

Session operation only. No parameters such as session counts, lamp hours, etc. can be observed or changed. One asterisk will appear in the display *.

Level - 2 - Supervisor's Level

Parameters values can be observed but not changed, and the tanning units can be controlled. Two asterisks will appear in the display **.

Level 3 - Manager's Level

Parameters can be observed and changed, and the tanning units can be controlled. Security numbers cannot be changed. Three asterisks will appear in the display ***

Note: The password should be in the range of **129-256** for each of the three security levels.

7.2 - THE CCS IV DISPLAYS

The CCS IV has a 32 characters display (two rows which can display sixteen characters each), which is the users interface to the tanning network. The display along with the key-pad allow the operator to perform all of the Intellitan network functions.

Examples:

A. Bed# 1 00:00
 N/A

Tanning unit 1 is not available for address one.

B. Bed# 1 00:00
 READY

Tanning unit has been identified by the CCS IV.

C. SECURITY #

Display which appears when the CALL/MENU button is pressed. You are required to enter a password to operate a tanning unit. In this illustration security level three password was entered and CLEAR button was pressed to return to return to the bed status display. (**Note:** the asterisks displayed in the proceeding displays represent the security level (see page 19)).

- | | |
|----------------------------------|---|
| D. Bed# 1 00:00
*** READY | Tanning unit is ready for use. |
| E. Bed# 1 XX:XX
*** DELAY | Prep or session delay counting down
xx:xx is the time counting down. The tanning
unit will automatically start when the timer
reaches zero. |
| F. Bed# 1 XX:XX
*** ON | Tanning unit 2 is running. The customer
tanning has XX:XX time remaining on the
session. |
| G. Bed# 1 XX:XX
*** PAUSE | The tanning session has been paused by the
tanner. The xx:xx represent the time remaining
on the timer. |
| H. Bed# 2 XX:XX
*** COOL | The tanning session on tanning unit one has
expired and the fan delay post session cooling
is on. The xx:xx represent the time remaining
on the fan delay. |
| I. Bed# 2 00:00
*** DIRTY | The clean room feature of the Intellitan timer is
enabled and the status of the bed is being
displayed after the session time has elapsed. |

J. GET PARAMS? (GET PARAMETERS) First of three Menu'. Can only be accessed with security level two or higher. Allows the user to view the various parameters of the Intellitan timer. Press **ENTER** to observe the value of a parameter, or **CLEAR** to return to the bed status display. If you entered this menu using security level three password, you can press the **NEXT** button to access the other available menus.

WHICH PARAMETER? First display of the GET PARAMETER menu. Enter the number of the parameter to be viewed and press the **ENTER** button.

Bed# 002 P#15
Data = BUSY CCS IV is getting the value of parameter fifteen (P15) for bed number two.

Bed# 002 P#15
Data = 00001 The value of parameter fifteen (P15) for for bed number two is one(1). To view the value of P15 for other beds you can press the **NEXT** and **PREV** (previous) buttons accordingly or press **CLEAR** to return to the bed status display.

K SEND PARAMS? (SEND PARAMETERS) Second of three menus. Can only be accessed with security level three. Allows the user to edit user accessible parameters. Press **ENTER** to change the value of a parameter, **NEXT** to access MGR PARAMS? menu or press **CLEAR** to return to the bed status display.

WHICH PARAMETER? You can press the **NEXT** or **PREV** (previous) button to position to another unit if desired or type the number of the parameter to be changed and press the **ENTER** button.
Bed#: 002

SEND WHAT DATA? Type the new value for the parameter and press **ENTER** or press the **CLEAR** button to return to the bed status display.

SEND PARAMS?

The CCS IV returns to SEND PARAMS? after updating a parameter. You can press ENTER to edit another parameter or press CLEAR to return to the bed status display.

L. MGR PARAMS?

(MANAGER PARAMETERS) Can only be accessed with level three security. Allows the user to edit CCS IV parameters. The maximum bed value, manager number, manager re-scan time, and maximum slave values can be entered through this menu.

M. MGR MAX BED

Press the key(s) for the value of the highest station address on the tanning network and press ENTER. You can press NEXT to proceed to another menu or CLEAR to return to the bed status display.

N. MANAGER NUM

Applicable only when more than one CCS IV is being used. The valid values are from zero(0) thru seven(7). Each CCS IV on the network has to have a unique manager number. Press the appropriate numeric key to assign the manager number and press ENTER, NEXT or PREV to move to another menu or press CLEAR to return to the bed status display.

O. MGR RE-SCAN TIME

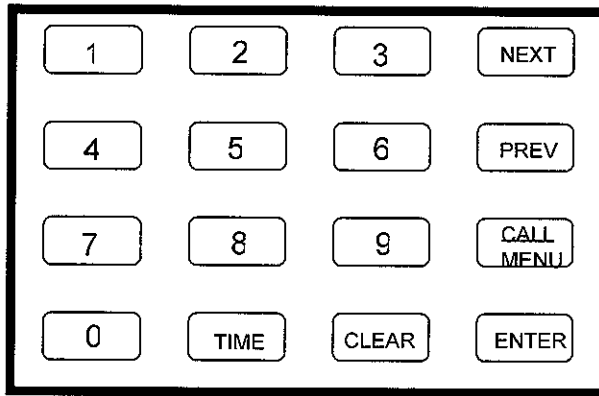
A value from zero(0) to one hundred(100) minutes may be entered. The CCS IV will scan the entire tanning network at the interval specified here. Key the desired RE-SCAN time and press ENTER.

P. MAX SLAVE

The value entered here references the number of CCS IVs that have been configured as slaves. Press the appropriate numeric key for the number of CCS IVs designated as slaves, then press ENTER. Press PREV to move to another menu or CLEAR to return to the bed status display.

7.3 - THE CCS IV KEYPAD

The 16-button keypad on the CCS IV together with the display along the top, allow the operator to perform all of the necessary functions for configuring and operating the Intellitran timers connected to the network.



Besides the number keys 0-9 there are six function keys labeled NEXT, PREV(Previous), CALL/MENU, ENTER, CLEAR, and TIME.

7.3.1 THE KEY

Pressing the NEXT key itself when the operating status of a tanning unit is being displayed will advance the display to the next available tanning unit on the network. After the maximum unit setting is reached, the CCS IV will display the status of bed one. The NEXT key with other function keys is used to advance menu options.

7.3.2 THE KEY

Pressing the PREV (previous) key by-itself when the operating status of the tanning unit is being displayed will show the status of the preceding bed on the network. The CCS IVs PREV key will stop functioning once the status of tanning unit one begins to be displayed.

7.3.3 THE KEY

To operate a tanning unit or perform the various functions of the CCS IV, the operator must have access to one of the three security levels. Pressing the CALL/MENU key prompts the operator for a security code. Key in the security number and press the ENTER key. Security code should be greater than 128 and less than 256. Asterisks(*) displayed on the bottom left of the display indicate the security level entered.

7.3.4 THE KEY

The ENTER key is used with the other function keys to submit or complete a command or request to the CCS IV or a specific timer on the timer network.

7.3.5 THE **CLEAR** KEY

The CLEAR key may be used to erase an incorrect value that may have been entered, or to return to the bed status display from within a menu item.

7.3.6 THE **TIME** KEY

In order for the CCS IV to send time to a particular tanning unit its display must read at least

Bed # 2 00:00
* READY

You cannot send time to a timer with status N/A, DELAY, ON, PAUSE, COOL, or DIRTY. Once time has been sent to the timer from the CCS IV the display will reflect the new status of the tanning unit, usually DELAY if a prep session delay has been programmed or ON if no prep delay has been preprogrammed and the tanning unit has immediately started. To enter time on the tanning unit shown in the display, press the TIME key and enter the minutes for the tanning session and press ENTER.

Section 8.0 - MANUAL OPERATIONS

8.1 - STARTING A SESSION

1) If you have not already entered the code to access one of the three security levels, press the CALL / MENU button and key the available security code and press ENTER.

Once you have entered the appropriate security level and the display for the bed reads **READY**, press the **TIME** button, key the time value for the session and press **ENTER**.

For example, to send 10 minutes to bed number one(1):

Make sure you have entered the appropriate security level (for this example we are going to assume that security level one was entered).

- | | | |
|-----|------------------------------|--|
| 1. | Bed# 1 00:00 Press
READY | <u>CALL</u> /MENU button, enter level one
code, press ENTER button |
| 2. | Bed# 1 00:00
* READY | Press TIME button. |
| *3. | Facial ON/OFF?
1=ON 0=OFF | Press either a One(1) or Zero(0).
If your tanning unit does not have a facial
press zero(0). |
| 4. | Enter the Time | Press the desired time in minutes
then press ENTER. |
| 5. | Bed# 1 xx:xx
* DELAY | Prep or session delay counting down
xx:xx is the time counting down. The
tanning unit will automatically start when
prep session delay expires. |
| 6. | Bed# 1 xx:xx
* ON | Tanning unit 2 is running. The customer has
XX:XX time remaining on the session. |

- The following instructions apply to SUNDASH tanning units with facials, and having timers with software version 23 and higher.

8.2 - STOPPING A SESSION

Make sure the CCS IV displays the status of the unit you wish to stop. If the CCS IV is not displaying the status of the unit you wish to stop, you can press the **NEXT** or **PREV** button, or key the number of the unit then press the **ENTER** button, to reach the unit. To cancel a session, press the **TIME** button and key the value zero(0) and press the **ENTER** button. Stopping a session does not require entering a security level code.

Note: If you have the clean room feature enabled and cancel a session, the clean room indication will not appear on the timer display.

8.3 - VIEWING PARAMETERS

As explained earlier, to view parameters on the Intellitan series timer you need to access the CCS IV using a security level two or higher. Once you have accessed the CCS IV using the appropriate security level, you can view any of the user or service parameters. When you select a parameter to view, the CCS IV reads the selected parameter on the displayed bed. Use the **NEXT** and **PREV** button to scroll through the available tanning units and view the same parameter. Refer to the Intellitan timers owners manual for a complete parameter list.

For example to view parameter fifteen (P15) on unit one.

Bed# 1 00:00
 READY

Press **CALL/MENU** button, enter level two or higher security code, press **ENTER** button

GET PARAMS?

(GET PARAMETERS) First of three menus. Press **ENTER** to observe the value of a parameter.

WHICH PARAMETER?

First display of the GET PARAMETER menu. Key the number of the parameter to be viewed and press the **ENTER** button.

Bed# 002 P#15
 Data = BUSY

CCS IV is getting the value of parameter fifteen (P15) for bed number two.

Bed# 002 P#15
 Data = 00001

The value of parameter fifteen (P15) for for bed number two is one(1). To view the value of P15 for other beds you can press the **NEXT** and **PREV** (previous) buttons accordingly.

You can press the **ENTER** button to return to the GET PARAMS? menu to view another parameter or **CLEAR** to return to bed status display.

8.4 - EDITING PARAMETERS

Through the CCS IV you can review or change any of the user or service parameters. Please consult your Intellitan timer owners manual for a list of parameters. It is a good idea to read the value of a parameter first before changing it.

Note: As indicated in section 7.1 security level three is required to edit any parameter.

The proceeding illustrations show the displays that will appear during the parameter editing process for tanning unit number two (2).

SEND PARAMS?

(SEND PARAMETERS) Second of three menus. Allows the user to edit user accessible parameters.
See page 49 for Intellitan parameter list.

WHICH PARAMETER?

Bed#: 002

Selecting the parameter number you want to change. You can press the NEXT or PREV (previous) button to position to another unit if desired or type the number of the parameter to be changed and press the ENTER button.

SEND WHAT DATA?

Bed#: 002

Changing the parameter value.

Type the new value for the parameter and press ENTER or press the CLEAR button to return to the bed status display.

Section 9.0 CCS IV Parameters

9.1 - Maximum Bed Number - MGR MAX BED

This maximum bed number value entered on the CCS IV should be equal to the **highest address** that an Intellitan timer is set to. For example if you have six units, but are addressing the Intellitan timers as 1,2,3,4,5, and 8, then the maximum bed number should be 8. **Note:** A third level password is required to access the Manager Parameter menu (MGR PARAMS?).

The proceeding illustrations illustrate the procedure for entering the maximum bed number value.

Bed# 1 00:00
READY

Press CALL/MENU button, key level three security code and press ENTER. Press NEXT button twice.

MGR PARAMS?

Third of three menus, press ENTER.

MGR MAX BED

The MGR MAX BED is your first option. Key the value of the highest station address and press ENTER.

Note: A max. bed value must be entered each time this parameter is accessed, if not the CCS IV will assume the default value of one.

9.2 - Manager Address - MANAGER NUM

Up to eight (8) CCS IVs can be networked together at a single salon. They can be either hooked up to computers or operated as stand alone units. One CCS IV must be set to address 0 (master). All additional CCS IVs must be set to an address from one(1) to seven(7).

The proceeding illustration describes the procedure for entering the manager address value.

Bed# 1 00:00
READY

Press CALL/MENU button, key level three security code and press ENTER. Press NEXT button twice.

MGR PARAMS?

Third of three menus, press ENTER then press NEXT.

MANAGER NUM

Key the value for the manager number and press ENTER (if you are not networking multiple CCS IVs together key the value zero(0)).

Important: If you are using multiple CCS IVs at one location it is imperative that you power up the CCS IV(s) addressed other than zero (0) first and power the CCS IV addressed as zero(0) last. If this powering scheme is not followed it will appear as if the CCS IVs are not functioning.

9.3 - MGR RE-SCAN TIME

The numeric value entered here controls the scanning function of the CCS IV. The interval at which the CCS IV scans the tanning units on the network can be set from zero (0) disabled up to one hundred (100) minutes. The CCS IV will automatically scan the tanning network at the prescribed interval.

The proceeding illustration describes the procedure for entering the manager re-scan time.

Bed# 1 00:00
READY

Press CALL/MENU button, key level three security code and press ENTER. Press NEXT button twice.

MGR PARAMS?

Third of three menus, press ENTER then press NEXT twice.

MGR RE-SCAN TIME

A value between zero(0) disabled and one hundred (100) minutes may be entered. The CCS IV will scan the entire tanning network at the interval specified here. Key the desired RE-SCAN time and press ENTER.

9.4 - Maximum Slaves - MAX SLAVE

The maximum slave (MAX SLAVE) parameter is used to define the number of CCS IV configured as slaves (have an address other than zero(0)). If you are not networking multiple CCS IVs together key in zero(0), otherwise key the value corresponding to the number of CCS IVs configured as slaves and press the ENTER button..

The proceeding illustration describes the procedure for entering the maximum slave value.

Bed# 1 00:00
READY

Press CALL/MENU button, key level three security code and press ENTER. Press NEXT button three times.

MGR PARAMS?

Third of three menus, press ENTER then press NEXT three times.

MAX SLAVE

Key the appropriate value corresponding to the number of slaves and press ENTER.

Note: You cannot view or edit parameters on an Intellitan timer using the CCS IV(s) designated as a slave.

Section 10 COMPUTER OPERATIONS

10.1- DESCRIPTION

The Computer Control Station V (CCS IV) provides access to a network of up to one hundred-twenty eight (128)¹ Intellitan® Series timers. The CCS IV performs complex network management functions and provides simple access to status and control information for each individual timer without requiring any additional software. This document describes the SSCS software and its salon management functions to manage the Intellitan salon better.

10.2 - IMPORTANT INFORMATION

SYSTEM REQUIREMENTS

IBM compatible Pentium 100 or higher
One available serial communications port for the CCS IV to be connected.
2MB of free hard disk space
4MB of RAM
Windows 95 or higher
Color monitor recommended

10.3 - LICENSE INFORMATION

This user guide, the software contained on the utility diskette, and the internal software and designs of the CCS IV are copyrighted with all rights reserved. By using the software licensed to you, you agree to be bound by the terms of this license. Neither the user guide, the software, nor the CCS IV internal code and design, may be sold, transferred, translated, copied, reproduced, de-compiled, disassembled, republished or derivative works created from in any form, in whole or in part, without the written consent of SunErgoline, Inc. A single backup copy of the software may be made in support of the software's use. All copies of the software shall contain the following copyright notice: "Copyright © 1999 SunErgoline, Inc." CCS®, Intellitan® and CompuSUN® are registered trademarks of SunErgoline, Inc.

¹ A Intellitan Series timer at software level 16 or higher is required for each tanning unit with a station address greater than 30. A Intellitan Series timer at software level 24 or higher is required for each tanning unit with a station address greater than 64.

Features

- Operate tanning units (turn on, reset session time).
- View, edit user accessible parameters.
- Control facial operation.

10.4 - Installation Instructions

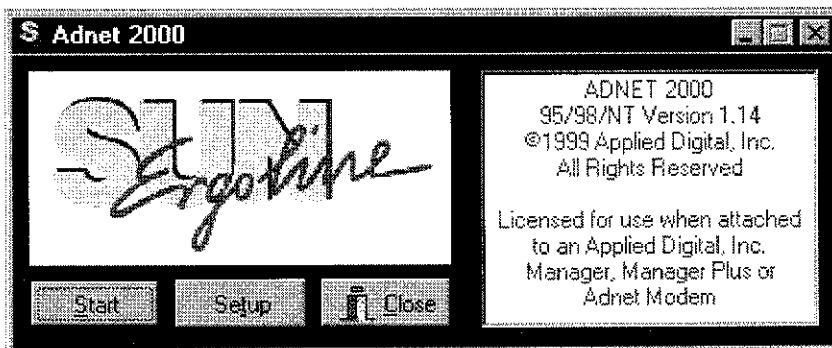
- Insert installation disk in your computers floppy disk drive.
- Click on the START icon using the left mouse button.
- From the Task Bar select Run.
- In the command line of the "Run" window, type A:SETUP if you are installing from Drive A, or type B:SETUP if you are installing from Drive B. Click "OK" to begin.
- The ADNET 2000™ Setup Program will take you step-by-step through the installation process.
- Upon completion of the installation process remove the installation disk and store in a safe place.

Operating Instructions

- From the Programs menu select the ADNET 2000™ icon to start the program.

Adnet 2000

- Select the "Setup" option to configure ADNET 2000™.



- Select the appropriate port from the “Comms Selection” by clicking on it using your left mouse button. You do not have to place values in the “Default Session Delay Time”, “Default Session Auto Start Setting”, and “Selected Modem”. The above mentioned fields and “AUX modem” are not applicable when using the Intellitan series of bed controllers.
- After selecting the appropriate COM port return to the ADNET 2000™ main menu by selecting the “OK” option using your left mouse button.

Setup

Comms Selection

☐ Modem

☒ COM1

☐ COM2

☐ COM3

☐ COM4

☐ COM5

☐ COM6

☐ COM7

☐ COM8

☐ AUX Modem

Default Session Delay Time: 3

Auto Start Setting

☐ After Delay Time Start Time with Lamps OFF

☒ After Delay Time Start Time with Lamps ON

☐ No Delay Wait for Button Press in Room

Selected Modem

Access Method

☐ ADNET DIRECT

☒ T-Max Manager

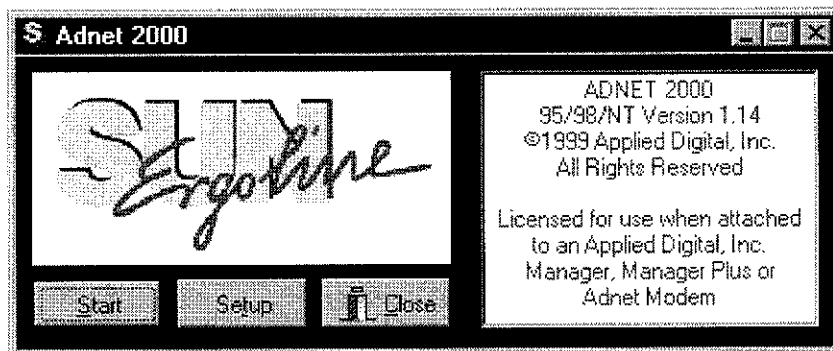
Adnet Direct Password

Current Directory: C:\Program Files\ADI\Adnet2000

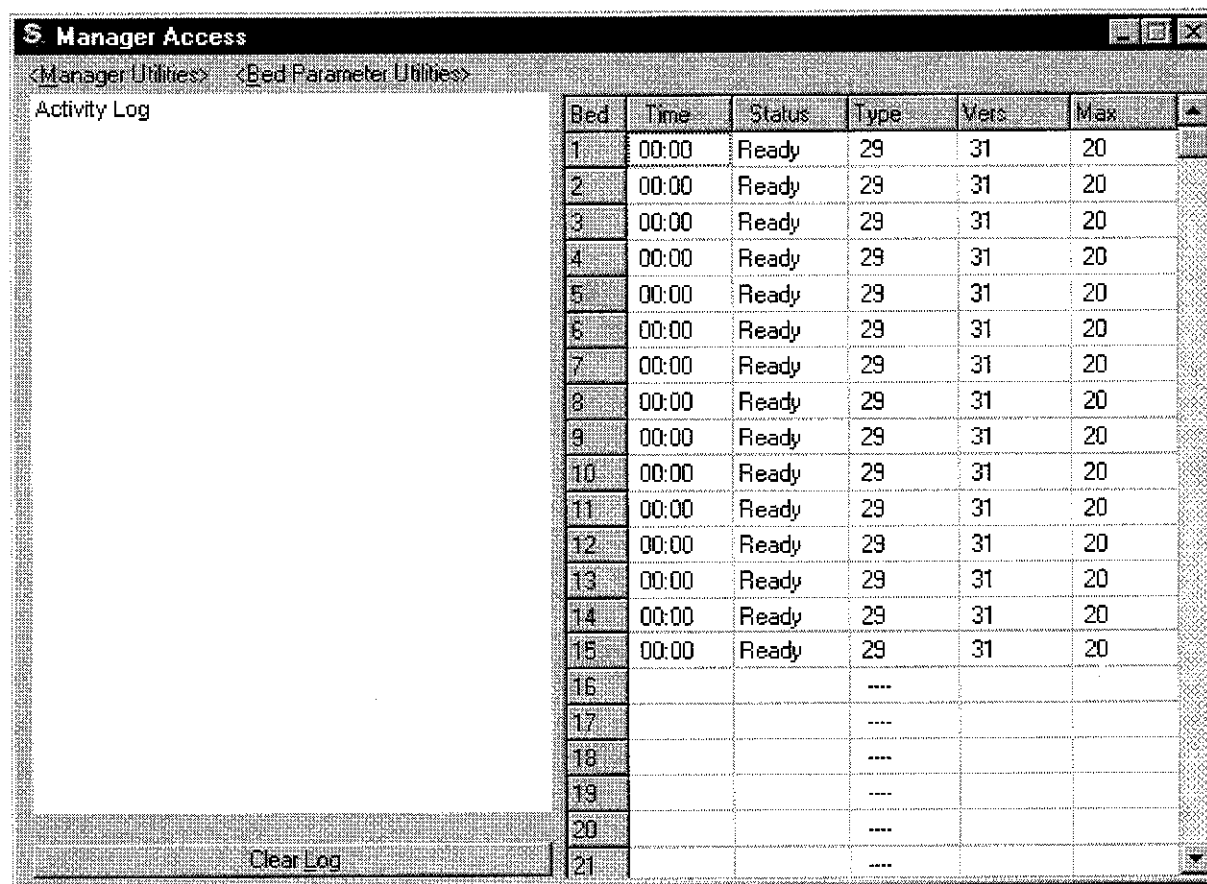
Intercom Setup

OK

Phone Book



- Click on the “Start” option to begin using the ADNET 2000™ program.



- Select “<Manager Utilities>” by left clicking once with your mouse button.

S Manager Access						
<Manager Utilities> <Bed Parameter Utilities>						
Activity Log						
Bed	Time	Status	Type	Vers	Max	
1	00:00	Ready	29	31	20	
2	00:00	Ready	29	31	20	
3	00:00	Ready	29	31	20	
4	00:00	Ready	29	31	20	
5	00:00	Ready	29	31	20	
6	00:00	Ready	29	31	20	

- Click on “Download Program from PC to Manager” to update the software on the CCSIV.
- After the ADNET 2000™ software reports “Program Download OK” you can click on the list of available beds and start tanning sessions.

S Manager Access						
<Manager Utilities> <Bed Parameter Utilities>						
Program Downloaded OK						
Bed	Time	Status	Type	Vers	Max	
1			---			
2			---			
3			---			
4			---			
5			---			
6			---			

Starting a Session

- To start a tanning session place your pointer in any column to the right of the desired room location and press the left mouse button once and answer the prompts on the screen.

The screenshot shows the 'Manager Access' window with a table of tanning beds and a 'Start Session' dialog box overlaid on it.

Manager Access
 <Manager Utilities> <Bed Parameter Utilities>
 Activity Log

Bed	Time	Status	Type	Vers	Max
1	00:00	Ready	1	6	20
2	00:00	Dirty	1	20	20
3	00:00	Dirty	1	20	20
4	00:00	Dirty	1	5	20
5					
6					
7					
8					
9					
10					
11					
12					
13	00:00	Dirty	1	18	20
14	00:00	Dirty	1	16	10
15	00:00	Dirty	1	12	20
16	00:00	Dirty	1	18	10
17	00:00	Ready	9	30	20
18	00:00	Ready	9	26	20
19	00:00	Ready	9	29	20
20			----		
21			----		

Start Session

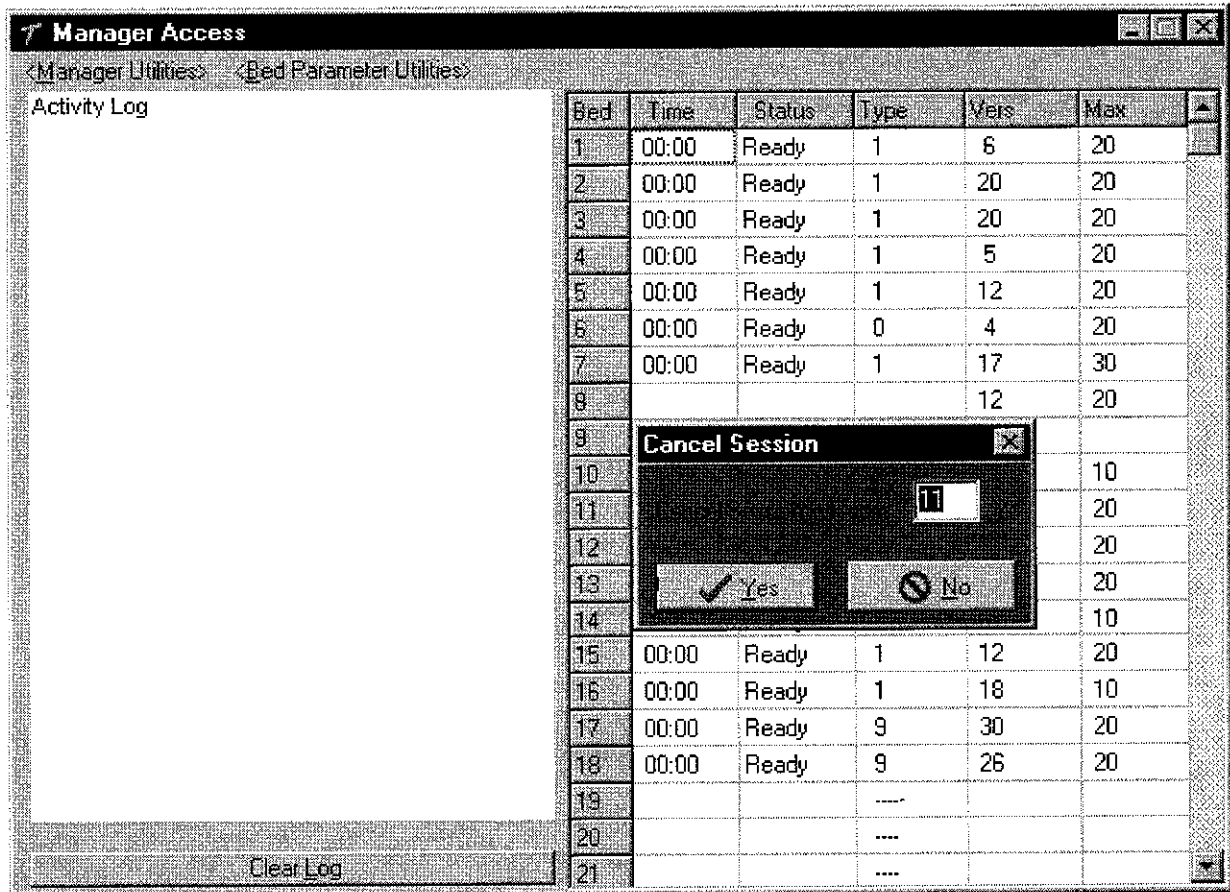
11 20

✓ Yes ✗ No

Clear Log

Stopping a session:

To stop or cancel a session place your pointer at a room location and press the left mouse button once. Answer the prompts on the screen.



Viewing/Editing parameters

- To view parameters click on the “<Bed Parameter Utilities>”.

Bed	Time	Status	Type	Vers	Max
1			---		
2			---		
3			---		
4			---		
5			---		
6			---		

- “<Timer Parameter Access>” screen as illustrated below will appear.

Bed	Param 1	Param 2	Param 3	Param 4	Param 5	Param 6	Param 7
1	0	1	30	10	1	470	0
2	0	1	0	0	2	235	0
3	0	1	0	20	3	208	0
4	20	1	15	36	4	179	0
5	0	0	0	20	5	211	3
6	2	1	6	60	10	1068	0
7	0	1	0	20	7	188	120
8	0	1	0	0	8	779	117
9							
10	0	1	10	10	10	12	120
11	3	1	30	40	11	1	121

Requesting Parameter 8 Password: Close

Bed	Param 1	Param 2	Param 3	Param 4	Param 5	Param 6	Param 7
1	0	1	20	10	1	471	0
2	0	1	0	0	2	0	0
3	0	1	0	20	3	210	0
4	20	1	15	35	4	181	0
5	0					213	3
6	2					1071	0
7	0					188	121
8	0					779	118
9							
10							
11	3	1	30	40	11	1	121

Change Parameter Data

Change Parameter 6 on Bed 3 to:

210

OK Cancel

Requesting Parameter 10 Password: xxx Close

- Only those parameters defined as user accessible parameters in the owner's manual of the tanning unit may be edited using ADNET 2000™.
- To edit any user accessible parameter using ADNET 2000™ enter the lamp hour accumulator value for bed three(3) in the password field and then use the left mouse button select the desired parameter to change (**Note:** Do not change the station address parameter using ADNET 2000™ , secondly delay parameters are displayed in 10ths of minutes i.e. 10 = 1 minute).
- A brief explanation and the acceptable maximum and minimum values of each parameter is given in the owners manual of your tanning unit.

Note: For manual operations you must change the security code for each level so that its greater than 128. Use the instruction and master security code provided with your CCSIV owner's manual to accomplish this task.

10.4 - BEFORE YOU BEGIN

Please read all instructions before beginning. If you are connecting your CCS IV to your computer system for use with a commercial salon management software package please consult that software documentation for configuration instructions. You must configure your software to use the Applied Digital T-Max compatible commands. Configuration instructions for some of commercial salon software packages that have been provided by the salon software developer and are located at the end of this document.

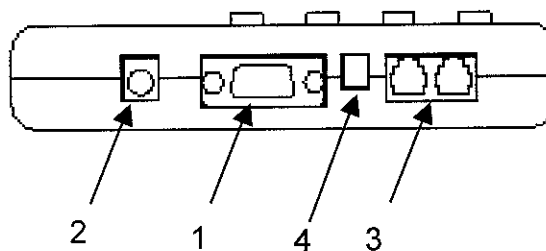
The CCS IV is available as a stand-alone or hardware and software solution ready to interface to your existing computer system. This document describes the hardware installation and software control program. The utility software will not run on the same computer system with a separate salon management software package at the same time.

If you are connecting the CCS IV to your computer system for use with a commercial salon management software package please consult that software documentation for configuration instructions. Where specific CCS IV installation instructions are not available for your commercial salon management software, you must configure your software to use the T-Max² compatible commands in order for your software to work with the CCS IV. Some software vendors have provided limited instructions to SunErgoline and these instructions can be found in the appendix.

10.5 - CCS IV HARDWARE INSTALLATION

COMPUTER CONNECTION

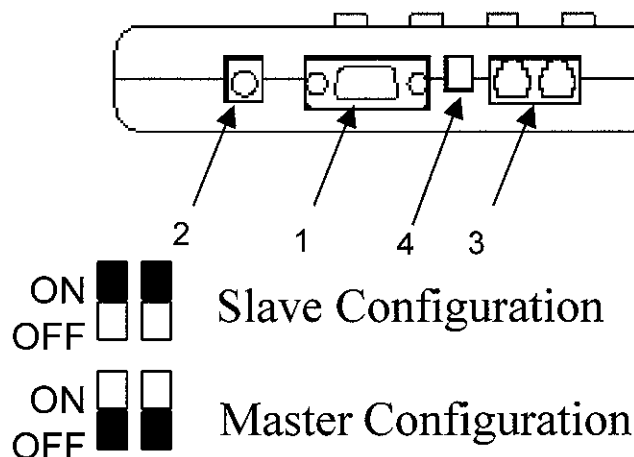
Select an available serial communications port on your computer system. Most computer systems have two serial ports located at the rear of the computer. These are usually called COM1 and COM2 and are the same serial ports used for an external modem or mouse connection. Connect the six-foot computer cable to the 9 pin serial port of your choice. Connect the other end of the computer cable to the CCS IV port labeled.



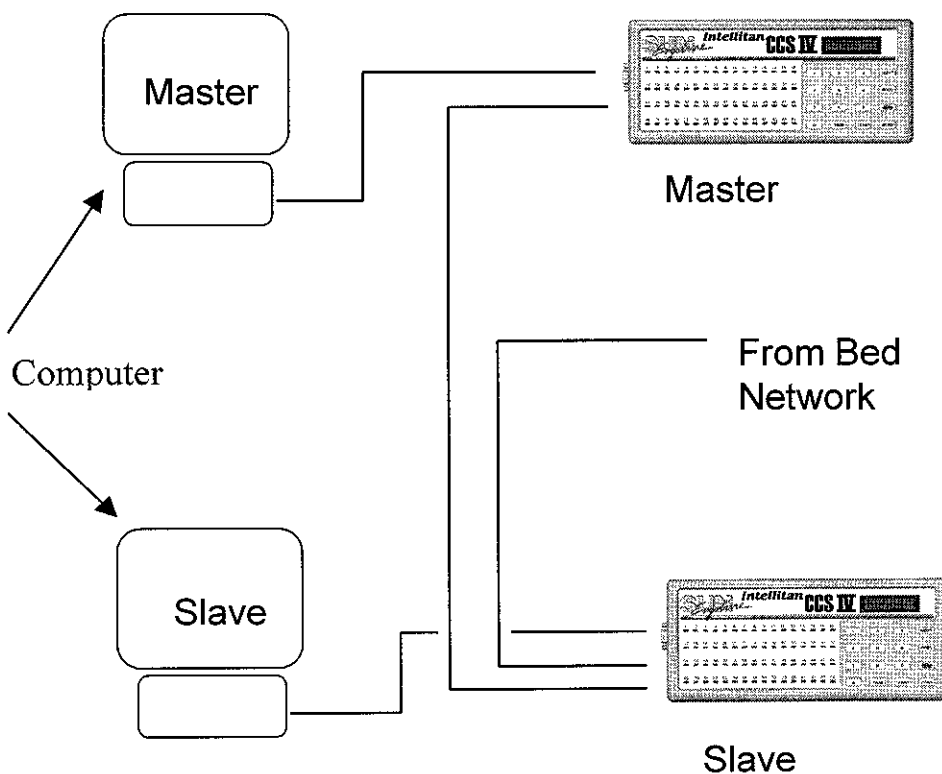
²T-Max is sold and copyrighted by Salon Systems, Inc.

Section 11.0 NETWORKING

Eight CCS IVs may be connected in a series to control up to 128 Intellititan timers. It is important that you address each CCS IV on the network uniquely and set the jumpers on the CCS IV(s) designated as slaves as illustrated in the diagram below. The jumpers are located at the position indicated by the number four (4) and must be set accordingly if there is more than one CCSIV at an installation.



The following illustrations display the network configurations for manual and computerized operations.



Note: You cannot view or edit parameters on an Intellititan timer using the CCS IV(s) designated as a slave.

Section 12 - TECHNICAL SUPPORT

12.1 - BEFORE YOU CALL

Our technical support team is available Monday through Friday from 8AM to 5PM, Saturday from 9:00AM until noon Central time to assist you in problem resolution.

Before you call:

Please be sure that you have checked all connections to your computer system and CCS IV.

Try to reload the software onto the CCS IV using the ADNET program and following these easy steps:

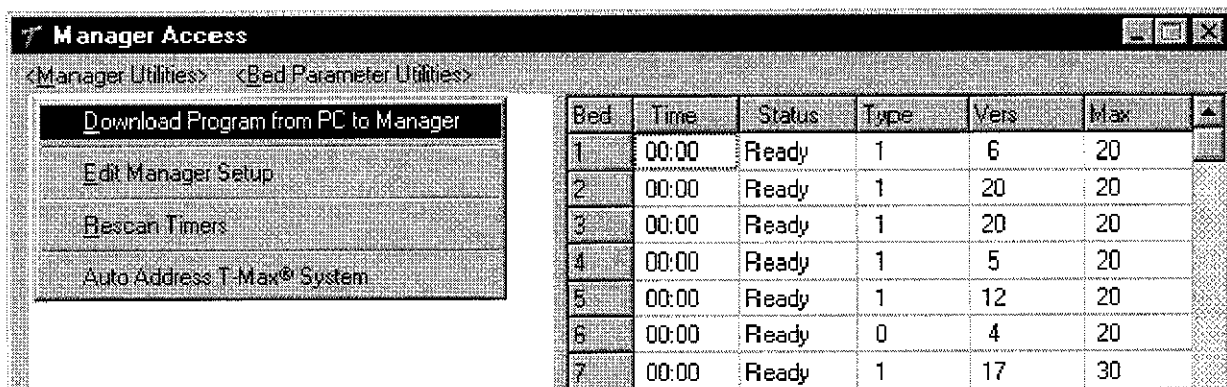
Unplug the power connector from the side of the CCS IV. Wait 30 seconds. Plug the power connector back into the side of the CCS IV.

Reloading the software on the CCSIV:

1. Exit all programs on your computer system.
2. Start the ADNET 2000 program.
- 3.

Bed	Time	Status	Type	Vers	Max
1	00:00	Ready	1	6	20
2	00:00	Ready	1	20	20
3	00:00	Ready	1	20	20
4	00:00	Ready	1	5	20
5	00:00	Ready	1	12	20
6	00:00	Ready	0	4	20
7	00:00	Ready	1	17	30

4. From the "Manager Access" screen displayed above, select "Manager Utilities" option by using the mouse, or by pressing the <Alt> and "M" button simultaneously.



5. Select "Download Program from PC to Manager" to start the software download process.
6. If the procedure is working right, the following statement will be scrolling down the screen.

When the program ends and displays "Upload OK" your CCS IV should be working properly. You should reboot your computer before loading your salon management software. If the CCS IV is connected to a different communications port or is defective the ADNET program will cause the PC to beep. If this happens press the Esc button to exit out of the program (you may have to reboot to exit the program.) Then reload the ADNET program using the parameters given on the previous page depending on your communication port.

If you are still having problems you can reach our technical support team at 1-800-445-0624

Please remember that due to the enormous differences in the many available types of commercial salon software packages, we are unable to provide technical support on any commercial salon software not sold directly by SunErgoline.

When you call, please be near your computer system, our technical support team will want to walk through the problem that you are having with you.

13.0 - COMMERCIAL SALON SOFTWARE

The information contained in this section is provided by the various commercial salon software developers for your convenience in settling up their software. Please contact your particular salon software documentation or developer for additional information. SunErgoline, Inc. does not endorse, warrant, service, nor provide technical support on any commercial software package. The latest version that the software vendor has provided to SunErgoline to test is listed in brackets [] at the beginning of their respective section.

Most commercial salon software packages require that the TSR program ADIREDAC (or a similar program provided by the developer) be loaded prior to executing the salon management software. This is usually achieved by placing the ADIREDAC program in the AUTOEXEC.BAT file in the root directory. A current version of ADIREDAC is found on the utility diskette and explained elsewhere in this manual.

With all commercial software packages, please make sure your Intellitan network is operating properly by using the CCS IV utility program included on the diskette provided with your IPI. If the CCS IV utility program can see and operate all of the tanning units attached to your network then your *properly configured* commercial software package should also.

All product names are copyright and/or registered trademarks of their respective owners.

13.2 - Helios Salon Software by Helios Data Technologies, Inc.

[Version tested: 6.2, 7.XX]

To configure Helios for use with the Computer Control Station IV (CCS IV) follow these steps.

From the Client profile screen press F8 (Goto Menu).

Enter your password and press <Enter>.

Select option 6(Default Menu) from the *Helios Main Menu*.

Select option 2(System Defaults) from the *Default Menu*.

If you are using version 7.XX select T-Max timer in the peripherals section.

- Look for "Are You Using a Bed Controller" prompt on the right hand side of the screen towards the top. In this field place a "T".
 - * Press F10 to save the changes.
 - * Press F5 to set Device Ports.
 - * Place a "1" or a "2" depending on the COM port to which you have connected the control unit, for the prompt "Digital Control Is On Port#:" [] (Serial Only). Press F10 to save the changes.
 - * Press F6 to set the "TIMER DEFAULTS" parameters.
 - * Place a value of "3500" in the "Timer Loop:" field, a value of "9600" in the "Baud Rate:" field, and a value of "125" in the "Rooms Loop:" field. The "Bed Delay:", and "Lamps On:" values are not utilized by the (CCS IV), and the values should be "0" and "N" accordingly.
 - Press F10 to save the changes.
 - Press <Esc> twice to return to the "DEFAULT MENU".

* Applies to Helios version 6.22

Select option 7 (EQUIPMENT DEFAULTS). Configure the beds you wish to control with the CCS IV as stated in the Helios User Manual. Under the "Location" column you should code each bed with the letter "A" and the timer address (i.e. bed number one should be at location A01, etc.). Press <Esc> three times and exit out of Helios. Reboot your computer for all changes to take effect.

If the CCS IV utility software can see and operate all of your beds and Helios can not, or Helios quits updating the beds frequently, then Helios may not have enough conventional memory available to shell to the SENDDATA.EXE program required to operate the beds. Free up as much available conventional memory as possible before loading Helios.

13.3 - Sunmate by Cascade Computer Solutions

[Version tested: 4.00h]

IMPORTANT NOTE: Sunmate is no longer supported by its author. SunErgoline does not Support Sunmate nor any other commercial salon package.

General Setup

From the Client Card press F10.
Highlight Manger Menu (option 9) and press <enter>.
Enter manager user and password and press <enter>.
Highlight Setup Menu (Option B) and press <enter>.
Look for "Enter COMx BAUD rate" where x = 1 or 2. Change the baud rate to zero (0) for the communications port that the CCS IV is attached to.
Press <CTRL+END> to move to the prompt "Is everything correct?" and enter the letter "Y" for yes. Then Press <enter>.
Press ESC to return to the manager menu.

Modify Bed Table

Highlight and select Equipment Menu (option 3) and press <enter>.
Use the letters "N" and P for Next and Prior to select the beds that are Intellitan controlled. Press the letter "E" to edit a particular bed.
Highlight select the prompt "Select Equipment Type".
Press the space bar once then the <enter> key to call up the equipment menu.
Select "MICRO REDAC" and press <enter>.
Enter zero (0) for the serial port, timer number, and Power actuator.
Press <CTRL+END> and respond with Y to the prompt "is everything correct?". Repeat until record is saved and first screen is redisplayed.
Repeat the above steps for each tanning unit controlled by the IPI.

13.4 - SunTouch Software by Interactive Designs, Inc.

[Version tested: 3.5, 4.0]

IMPORTANT NOTE: SunTouch does not require the ADIREDAC TSR. SunTouch handles all communication functions with the CCS IV internally.

Configuring SunTouch to work with the CCS IV.

Note: In order to select any of the various options available in the SunTouch software, you must click once using your mouse or *optional touchscreen* on the desired icon.

To configure SunTouch to operate your tanning beds via the CCS IV, perform the following steps:

1. From the menu bar located along the top of the screen select the button labeled "Setup" by clicking on it once with your mouse. This button is between the buttons labeled "Sales Tracer" and "Register." When selected the **Employee ID pad** is displayed.
2. Enter your 4-digit employee id number.
3. From the menu bar located along the bottom of the screen, select the button labeled "Tan Beds" by clicking on it once with your mouse. *This button is the last button to the right.* When selected, the **Tan Bed Profile screen** is displayed. *Note: Remember to select the "Save" button when changes are made.* Once you've made all the changes to the tanning beds, you will need to exit SunTouch and then restart SunTouch for the changes to take affect.

The Tan Bed Profile screen provides fields in which you may enter information pertaining to the tanning beds you are using. You can move from field to field using the ENTER, TAB or ARROW keys.

4. In the **database setup section**, of this screen, the information in the port address field must match the parameter five setting (station address) on the tanning bed (Intellitan Timers only). **Note:** *SunTouch provides the flexibility to label tanning rooms different from the actual station addresses on the Intellitan timers.*
5. Select the button in the **database setup section** that has the pictures of a clock and a cable by clicking on it once with your mouse. When selected, the **Database Timer Setup** menu is displayed.
6. From the **timer** section, select the option "**T-Max**" by clicking on it once with your mouse. An option is selected when a black dot appears in the circle next to the name.
7. No selections need to be made in the baud rate section.
8. From the setup section, select the COM port to which the CompuSUN is connected, To set the COM port, click on the button with the arrow pointing downward. From the list of numbers, select the number which corresponds to the port in which the timer is connected.

9. From the setup section, select the Delay Time by clicking on the button with the arrow pointing downward. From the list of numbers, select the number which is equal to or greater than the delay time set on the Intellitan Timer (parameter four). **Note:** *If the delay time in SunTouch is set to an amount less than the delay time set in the Intellitan timer, once the delay time has expired in SunTouch, SunTouch will act as though the bed was started even though it was not.*
10. Once you have entered all of the tanning bed information, you must exit SunTouch and then restart SunTouch for the changes to take affect.

Starting a Tanning Session

To start a tan session, perform the following steps.

1. Be sure the Main screen is displayed. If it's not, select the button labeled "Main" from the menu bar located along the top of the screen.
2. Select the button labeled "Client" located above the color coded legend along the right side of the screen.
3. From the list of clients, select the client you're looking for. You can search for a client by entering the letters of their last name. As each letter is entered the client list will scroll to reflect the letters chosen. When a client is selected, the Main screen is displayed.
4. Select the room number which corresponds to the bed the client wishes to use.
5. Enter in the amount of time the client wishes to tan and then select the button labeled "Start". This will display the Employees ID pad. **Note:** *If a client's package has a surcharge or maintenance fee, the Register screen will be displayed so you can collect the tanning fees. Once the fees have been tendered, the tanning process is complete and step 6 will be ignored.*
6. Enter in your employee id number.
7. The tanning process is complete.

Appendix A TROUBLE SHOOTING GUIDE

Symptom	Cause	Solution
Cannot set tanning units with CCSIV No lights will illuminate on the CCIV.	Control level not established.	Enter security code to establish control level.
	No power to CCSIV due to a faulty power transformer or faulty CCSIV.	Make sure that the transformer is plugged in to a working power outlet. Try a different power outlet. Try a different power transformer.
The CCSIV will not accept any commands and the LEDs for units 57-64 are only illuminated in orange.	CCSIV locked up due to an electrical surge.	CCSIV internal program corrupt. Reload ADNET utility program to reset CCSIV. Operating instructions for ADNET are listed in the owner's manual of the CCSIV.
The CCSIV will not recognize any new timers.	Intellititan timers incorrectly addressed at tanning unit.	Check station address on the Intellititan timer at the tanning unit(s). Make sure the station address is unique and not duplicated or that the station address is at zero.
	Network has not been rescanned after a bed has been added or powered back on after being serviced.	Press the CALL/MENU button, 999 and ENTER button to rescan the bed network.
	"MGR. MAX. BEDS" value set too low.	Follow the instructions in the owner(s) manual, and set the correct value for the MGR MAX BED parameter.
One or more of the displays on the CCSIV is blank where the status of a bed should be displayed.	Network has not been rescanned after a bed has been added or powered back on after being serviced.	Press the CALL/MENU button, 999 and ENTER button to rescan the bed network.
	Intellititan timers incorrectly addressed at tanning unit.	Check station address on the Intellititan timer at the tanning unit(s). Make sure the station address is unique and not duplicated or that the station address is at zero.
	No power to the tanning unit.	Make sure the circuit breaker is on for the tanning unit and the LEDs on the timer display are illuminated.
	No network connection to the timer.	Make sure the network cable is attached to the tanning unit.
	"MGR. MAX. BEDS" value set too low.	Follow the instructions in the owner(s) manual, and set the correct value for the MGR MAX BED parameter.
	Defective timer.	Swap the Intellititan timer with one that works to determine if the timer on the bed is defective. This procedure will also help to find network cable problems.
	Network cable bad or defective.	Bypass the existing network cable for the bed with which you are experiencing communication difficulties. Make a test cable to go from the CCSIV directly to the Intellititan timer on the bed in question.
CCSIV displays "E7" and sounds an alarm.	Previously configured timer has lost communication with the CCSIV.	Press the CALL/MENU button, 999 and ENTER button to rescan the bed network.
	No power to the tanning unit.	Circuit breaker may have tripped for the tanning unit. Reset circuit breaker.
	Network cable disconnected from tanning unit.	Make sure network cable is still attached to the tanning unit.

Master Password

43400

Please detach and place in a secure place.

