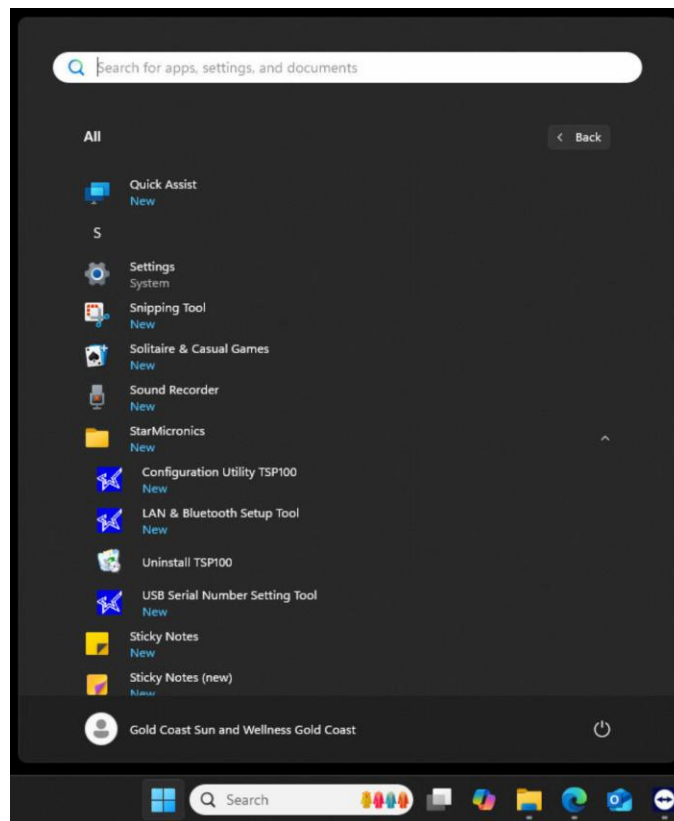




SunLync Cash Drawer Setup Guide

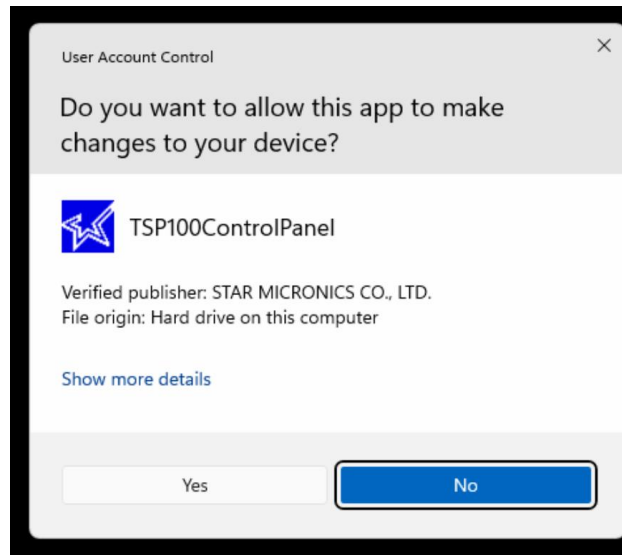
SunLync supports any MMF Cash Drawer that connects to the supported receipt printers. First install and configure the Star Printer Utility to work with the receipt printer.

To start, the Star Utility program should have a COM port assigned within the Serial Ports settings.

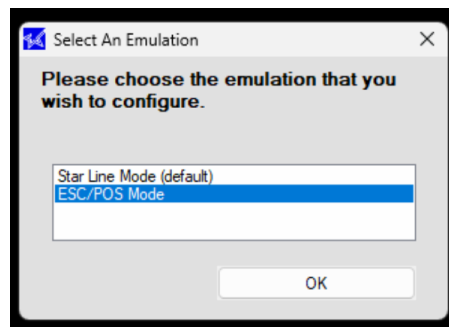


With the Configuration Utility installed. Start the Configuration Utility TSP100 program.

SunLync Complete Install Guide



Select Yes to the User Account Control permission request.

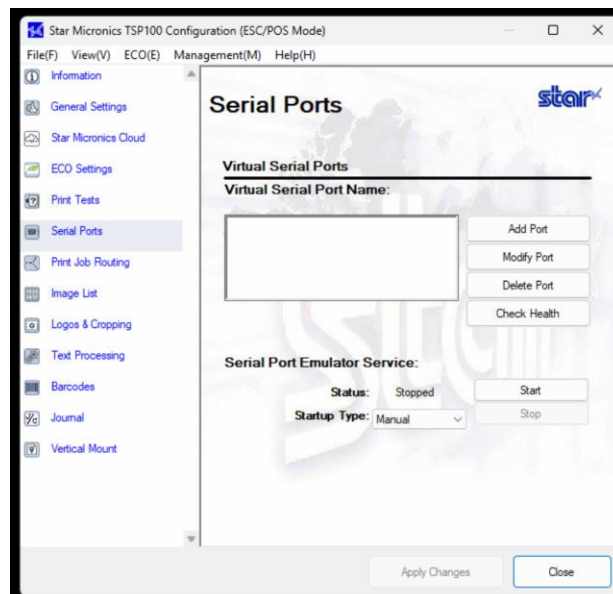


Select ESC/POS Mode, before clicking OK.

SunLync Complete Install Guide

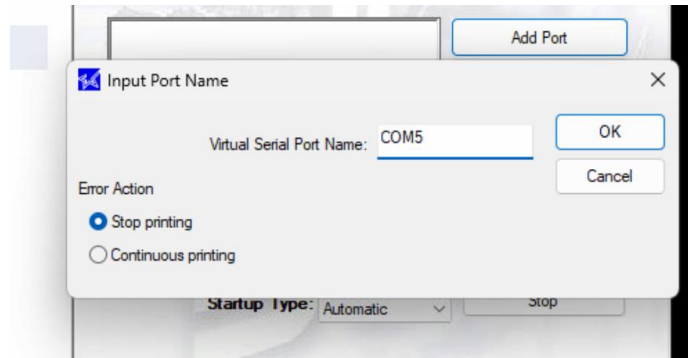


Now select the Serial Ports settings.



Select Add Port.

SunLync Complete Install Guide

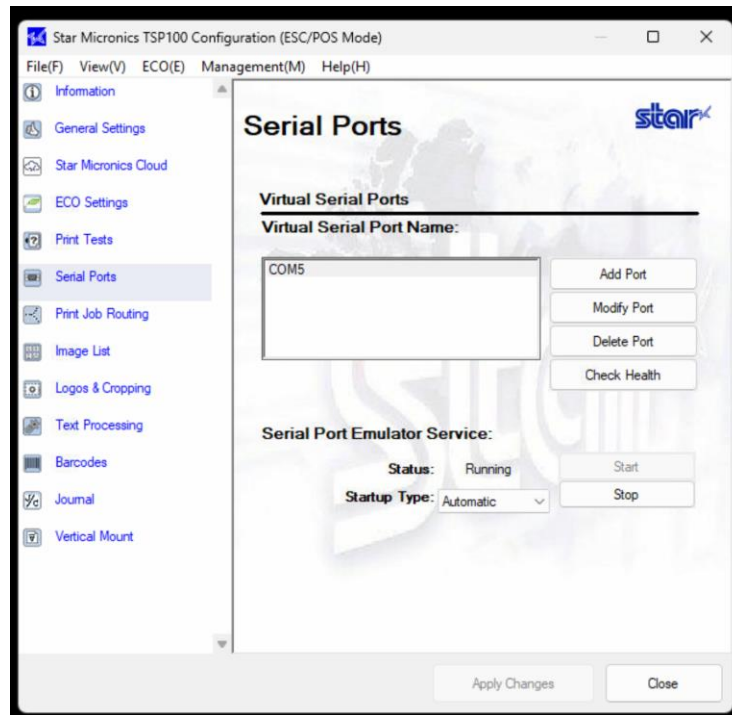


Create a new port that is not already being used. Example “COM5”. Do not include spaces in the name.

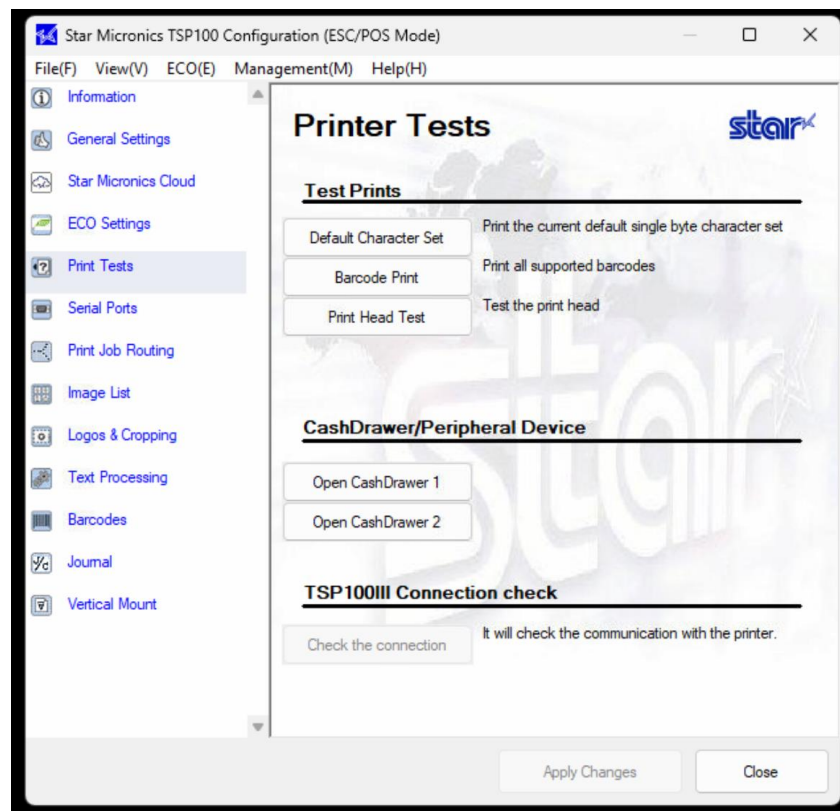


Set the Startup Type to Automatic.

SunLync Complete Install Guide

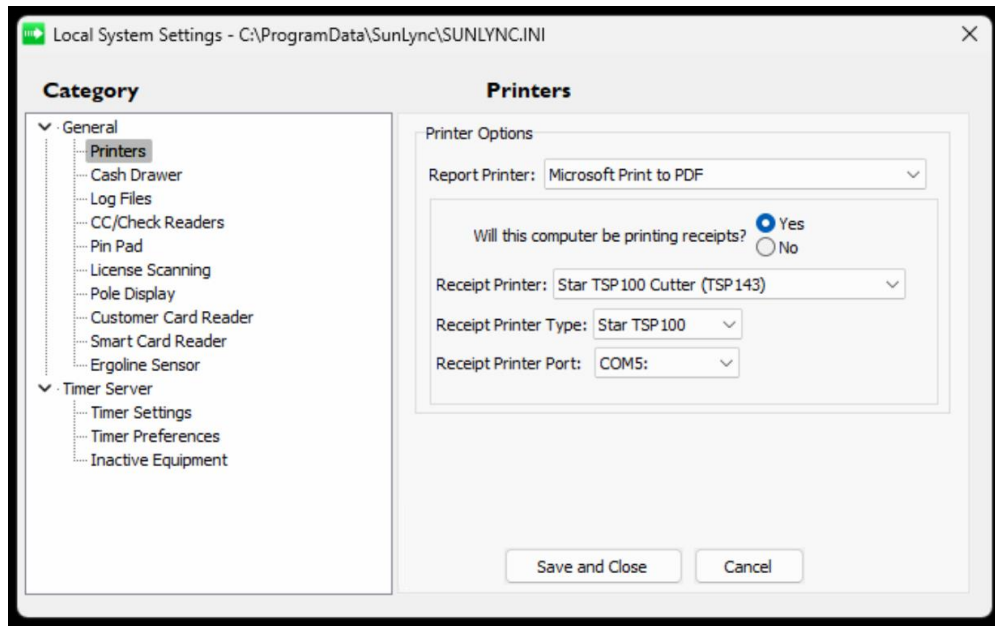


Apply Changes and Start, if not already running.

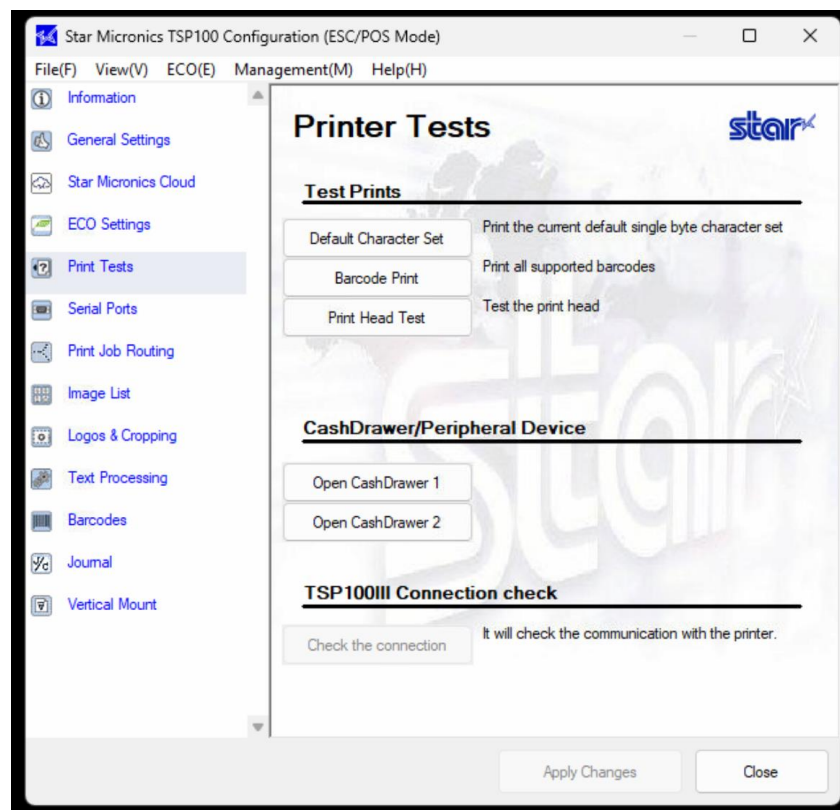


Go to the Printer Tests and Print Head Test to make sure the printer is working correctly.

SunLync Complete Install Guide

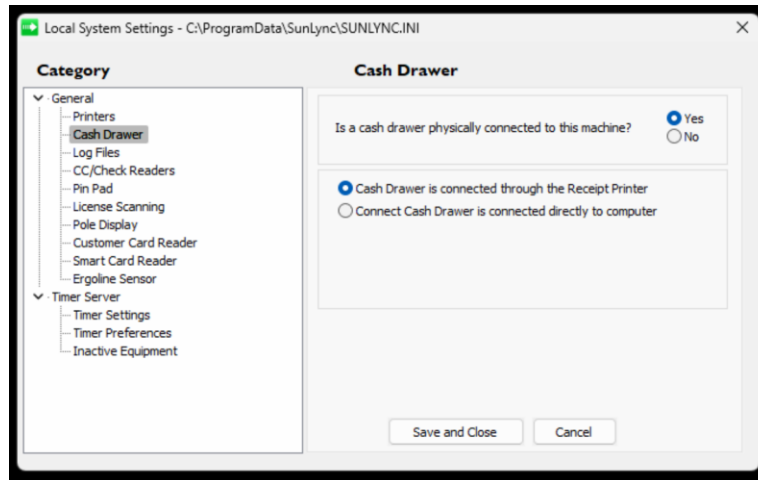


Next open Sun.ini and under the Printers settings. Turn on that the computer will be printing receipts and set the receipt printer type and port.



Then you can test opening the cash drawer under the Print Tests settings in the Star Printer Utility. To confirm it's working correctly.

SunLync Complete Install Guide



Then go to the Cash Drawer settings in Sun.ini and select Yes for the cash drawer being physically connected to the computer. Set that the cash drawer is connected through the receipt printer.