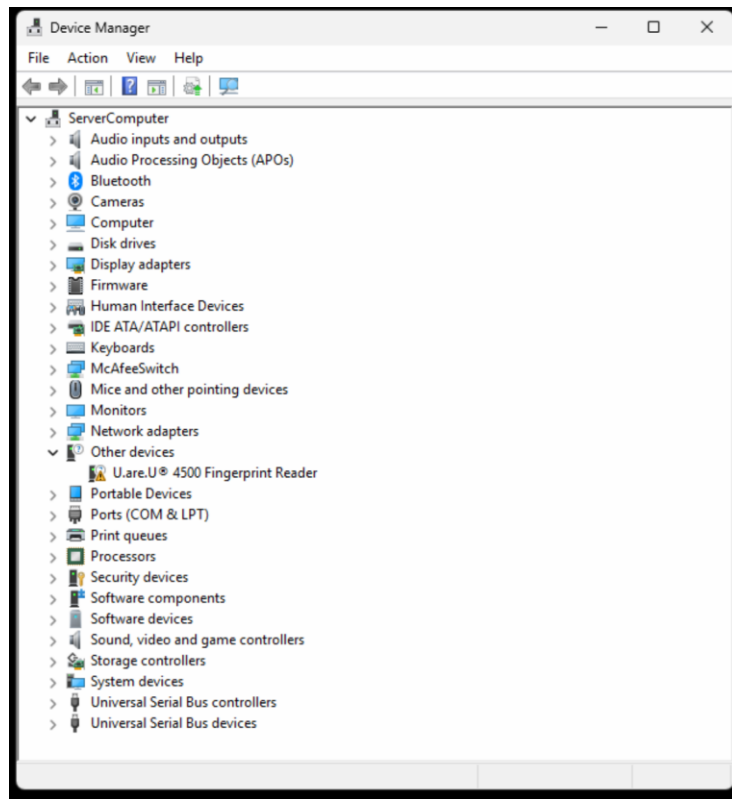




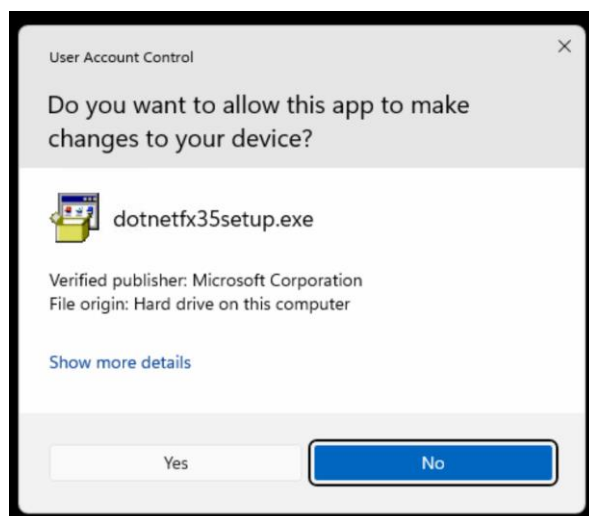
SunLync Fingerprint Reader Install Guide

After plugging in the Digital Persona U.are.U 4500 Fingerprint Reader, you may see a driver warning in Windows under Device Manager.

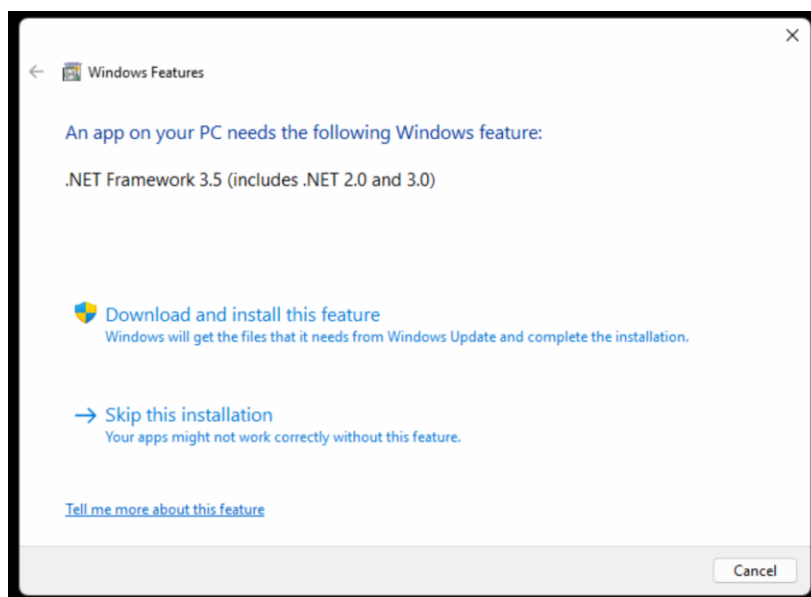


Most modern Windows computers don't already have .NET Framework 3.5 installed. You will need to download and install this first. Download available at <https://www.microsoft.com/en-us/download/details.aspx?id=21>

SunLync Fingerprint Reader Install Guide

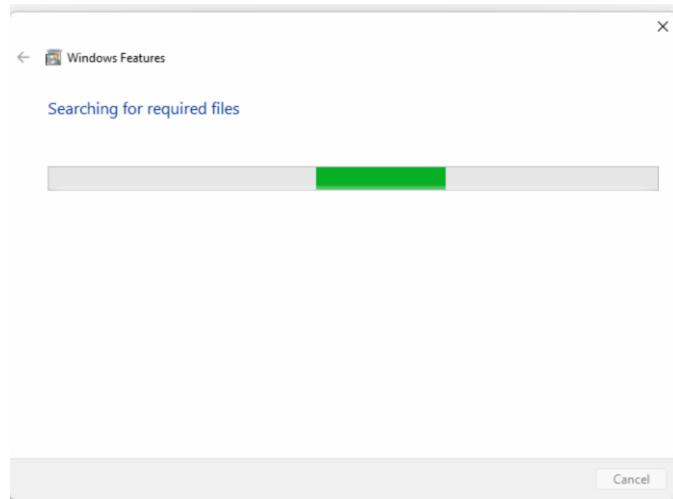


Make sure to run as administration and select Yes to the User Account Control permission request.

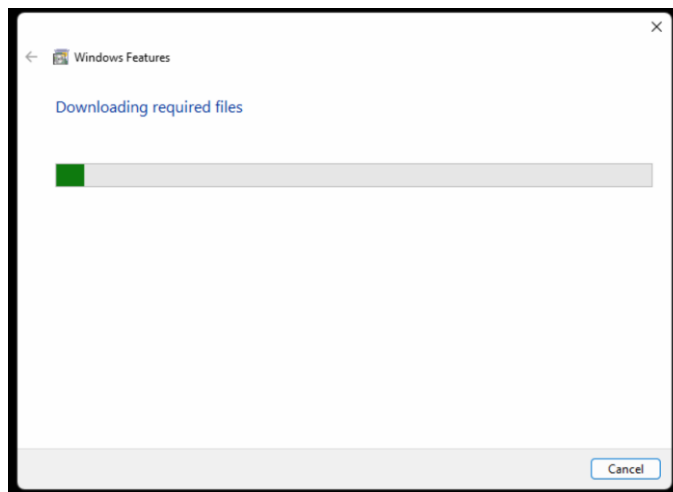


Next you will need to "Download and install this feature".

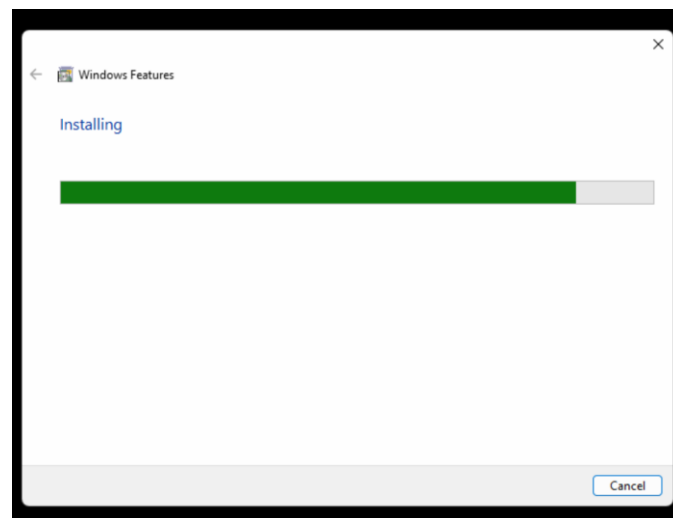
SunLync Fingerprint Reader Install Guide



Windows will search for which features you are missing.

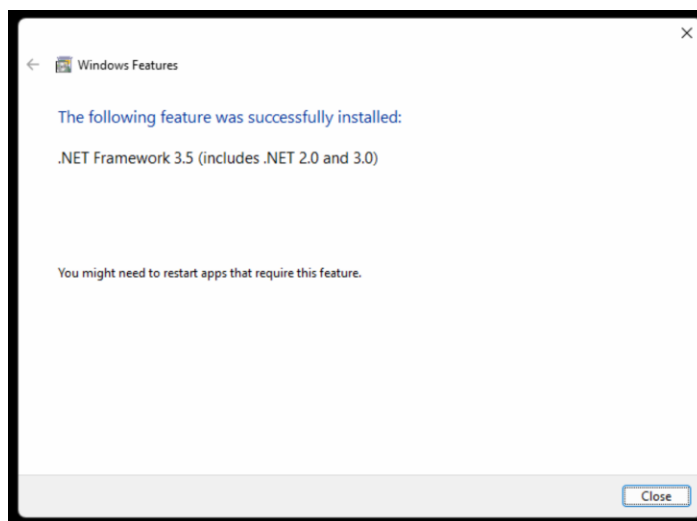


After searching for the required files. It may take a while to download the required files.

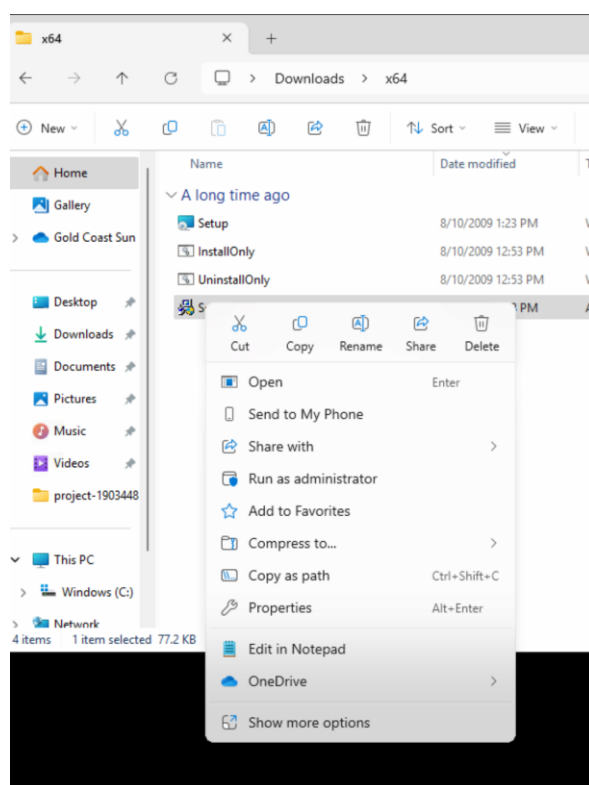


SunLync Fingerprint Reader Install Guide

Finally, Windows will install the .NET Framework feature.

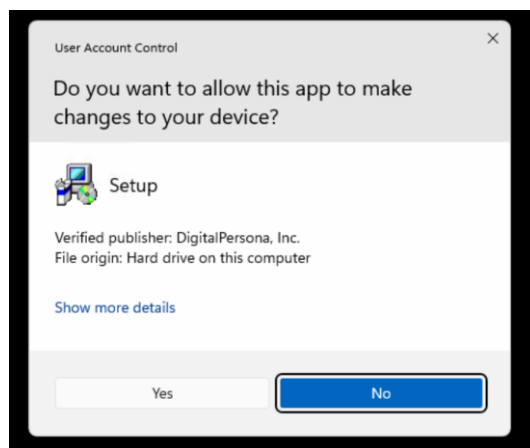


Once finished, select Close.

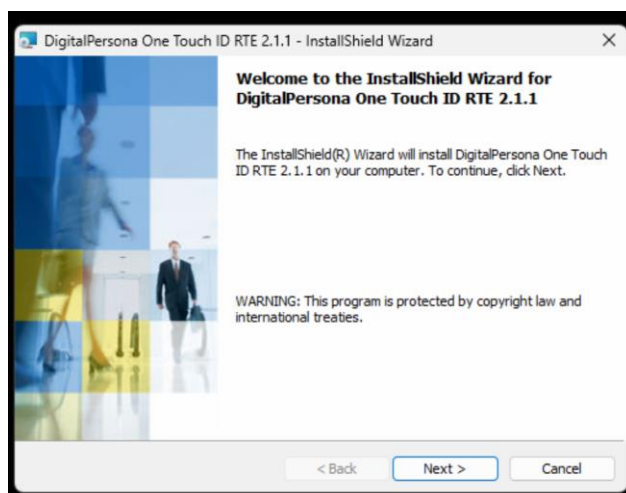


Next, run as administrator the copy of the Digital Persona U.are.U 4500 Fingerprint Reader drivers. If you need a copy, please contact SunLync support.

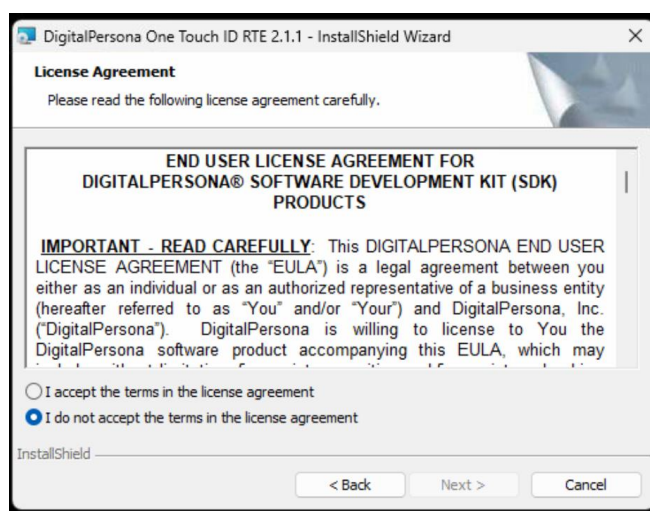
SunLync Fingerprint Reader Install Guide



When asked, select Yes to the User Account Control permission request.

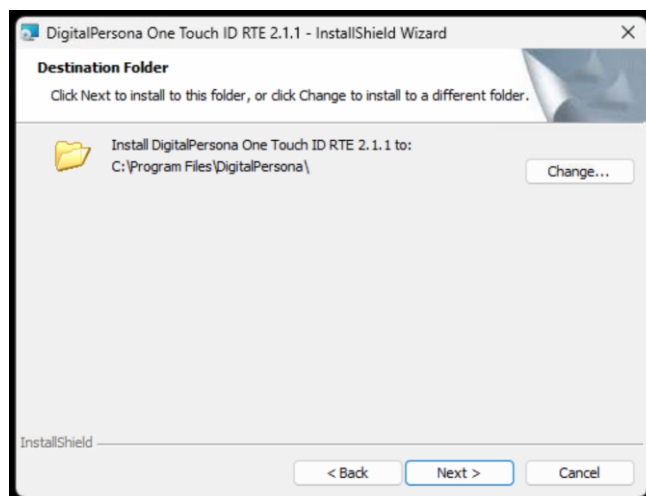


Click Next to move to the next page.

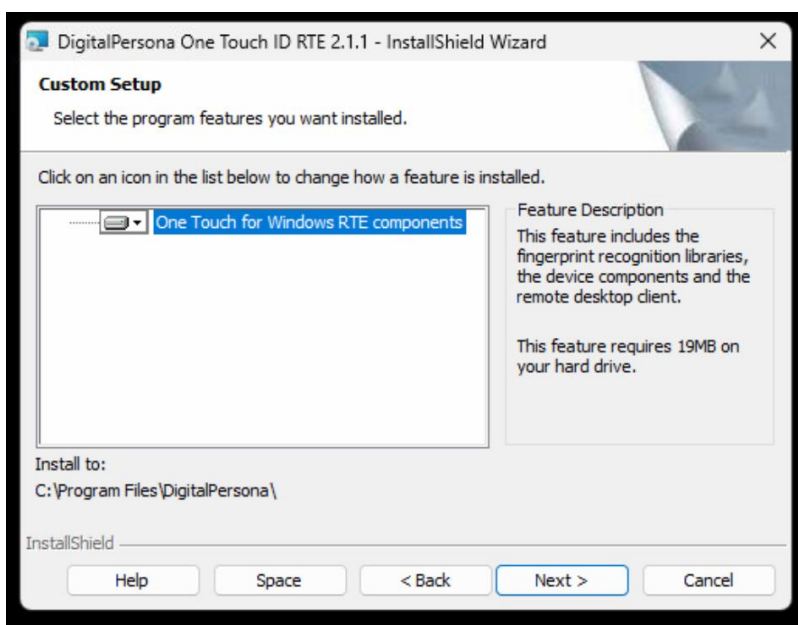


SunLync Fingerprint Reader Install Guide

Next, accept the end user license agreement.

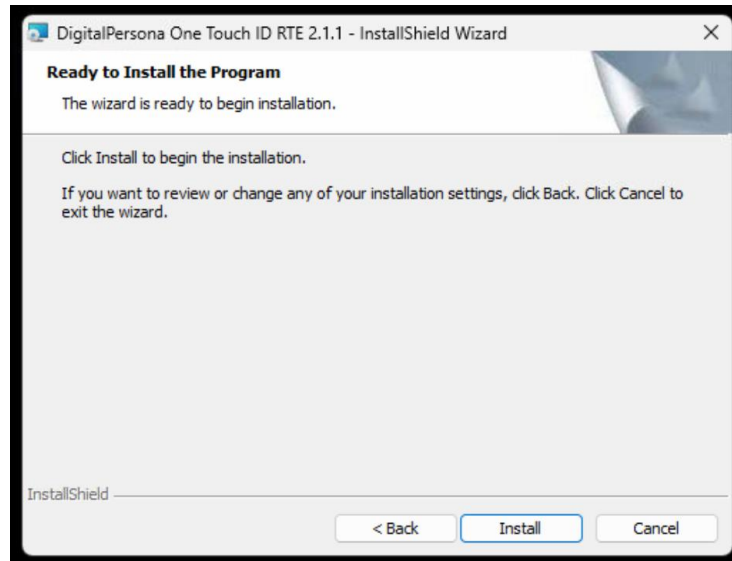


Next to use the default folder destination.

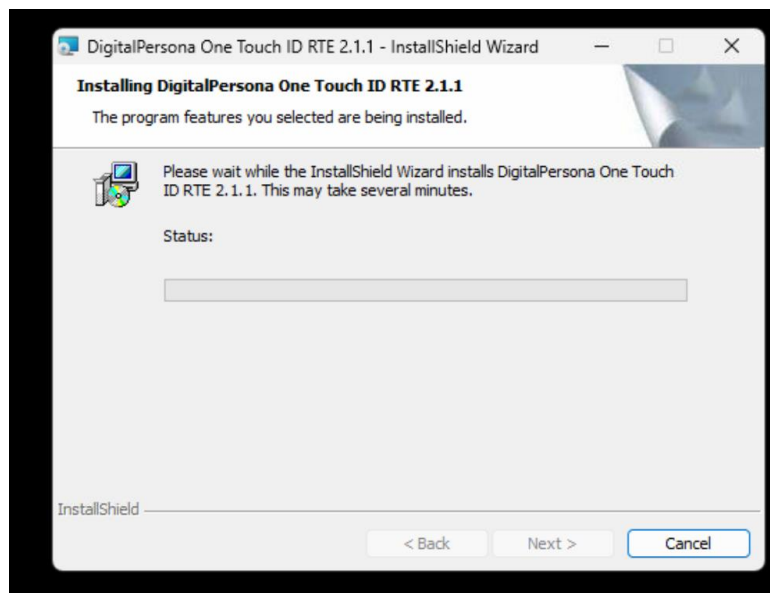


Don't change the custom setup. Just click Next once more.

SunLync Fingerprint Reader Install Guide

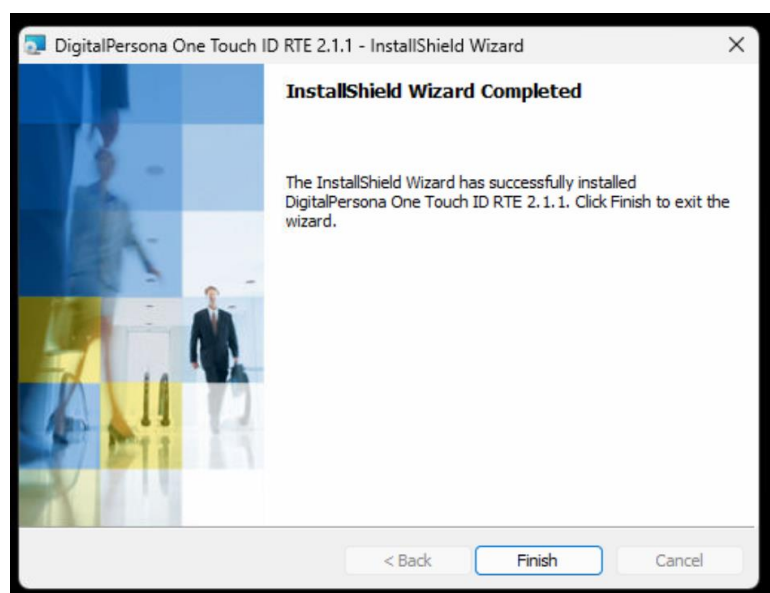
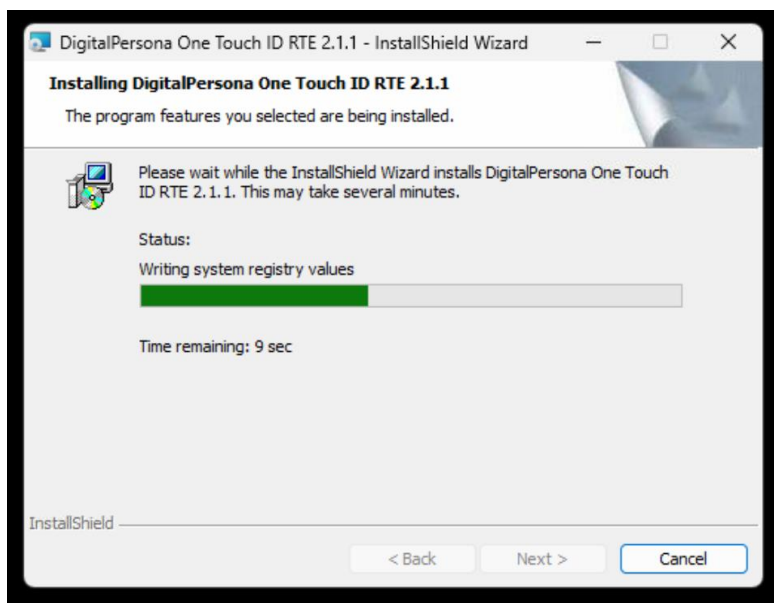


After which you can select Install.

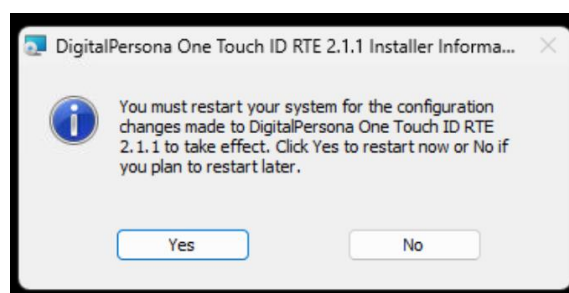


It may take a minute or two to install the software.

SunLync Fingerprint Reader Install Guide

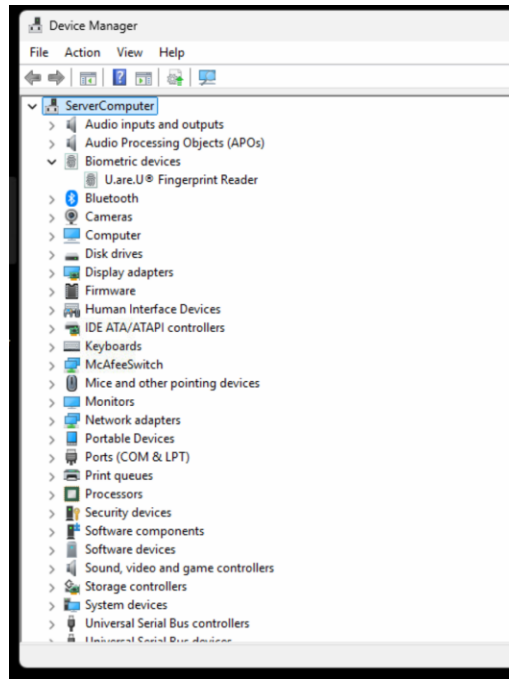


Once the installation is complete, select Finish.

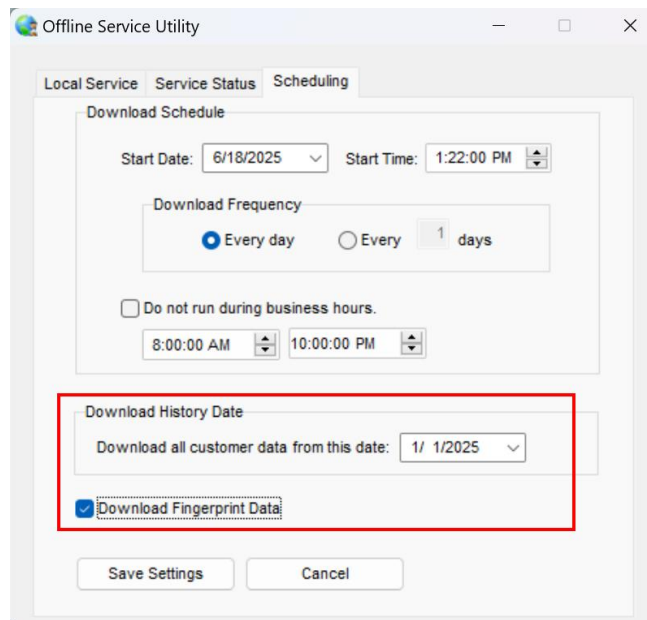


SunLync Fingerprint Reader Install Guide

You may be required to restart the computer now that the installation is complete.



Check the status again in Device Manager to ensure there is no longer a driver error.



To search for clients via the fingerprint reader, copies of fingers must be saved on the computer. Make sure “Download Fingerprint Data” is turned on in the Offline Service Utility program.